



RESIDENZ ILLYRICA

Building supplement



Overview 1st floor



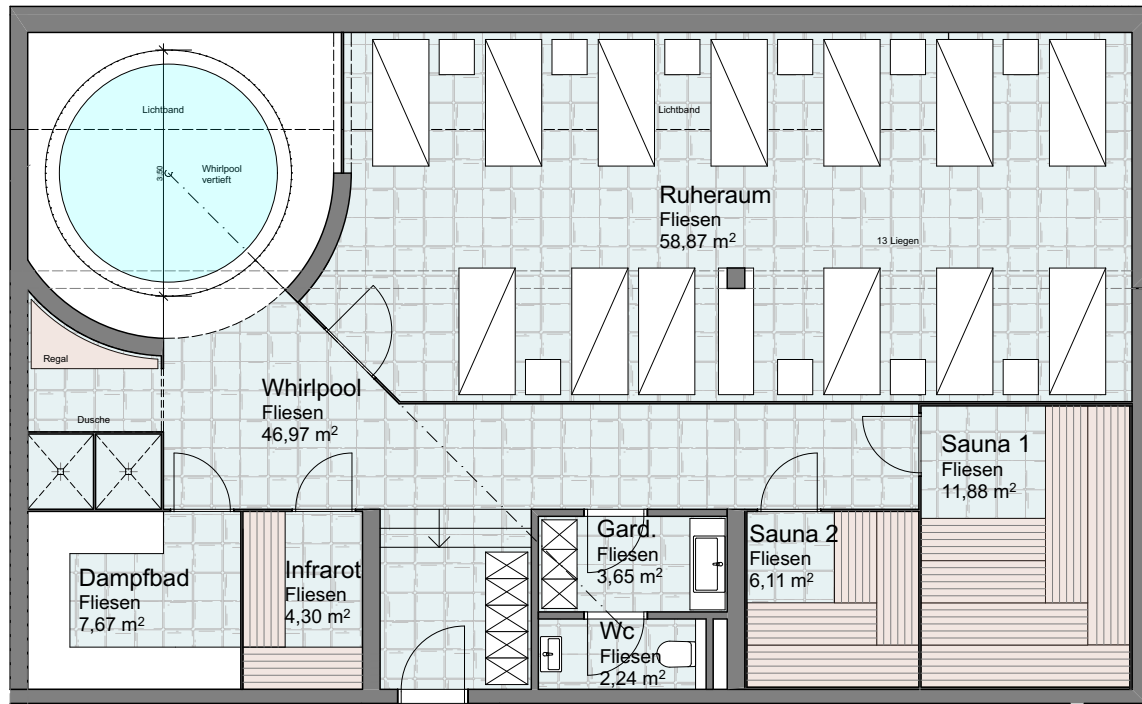
Overview 2nd floor and Penthouses



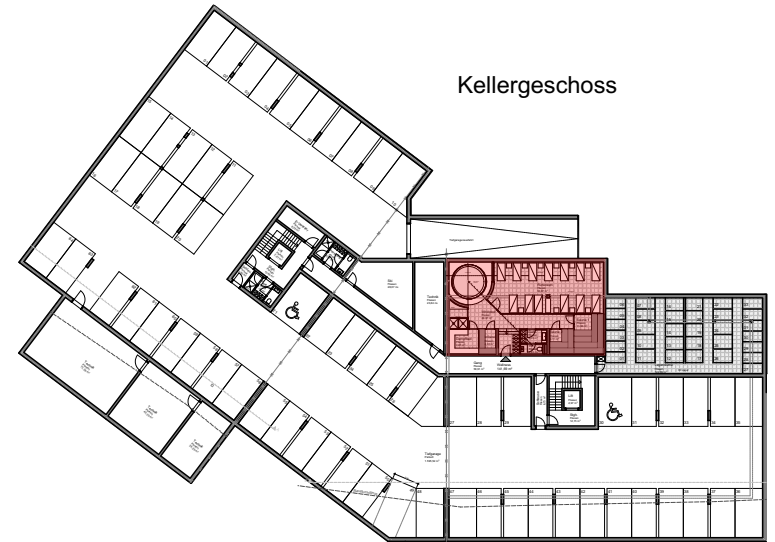
Overview Penthouses



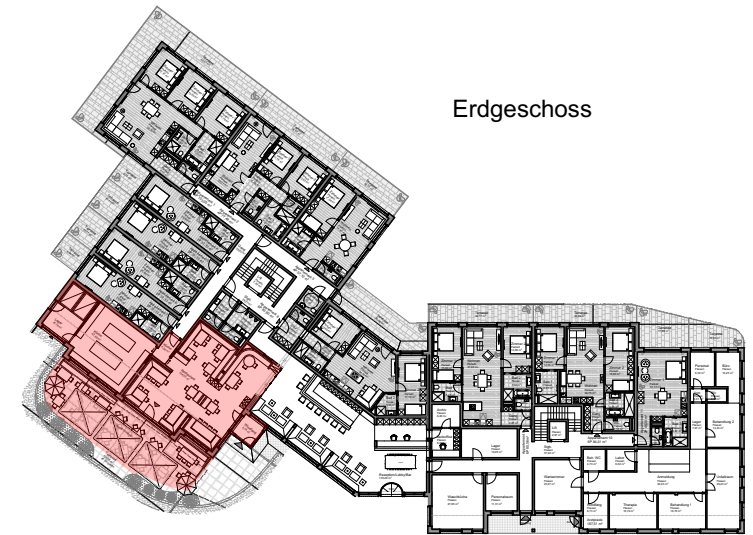
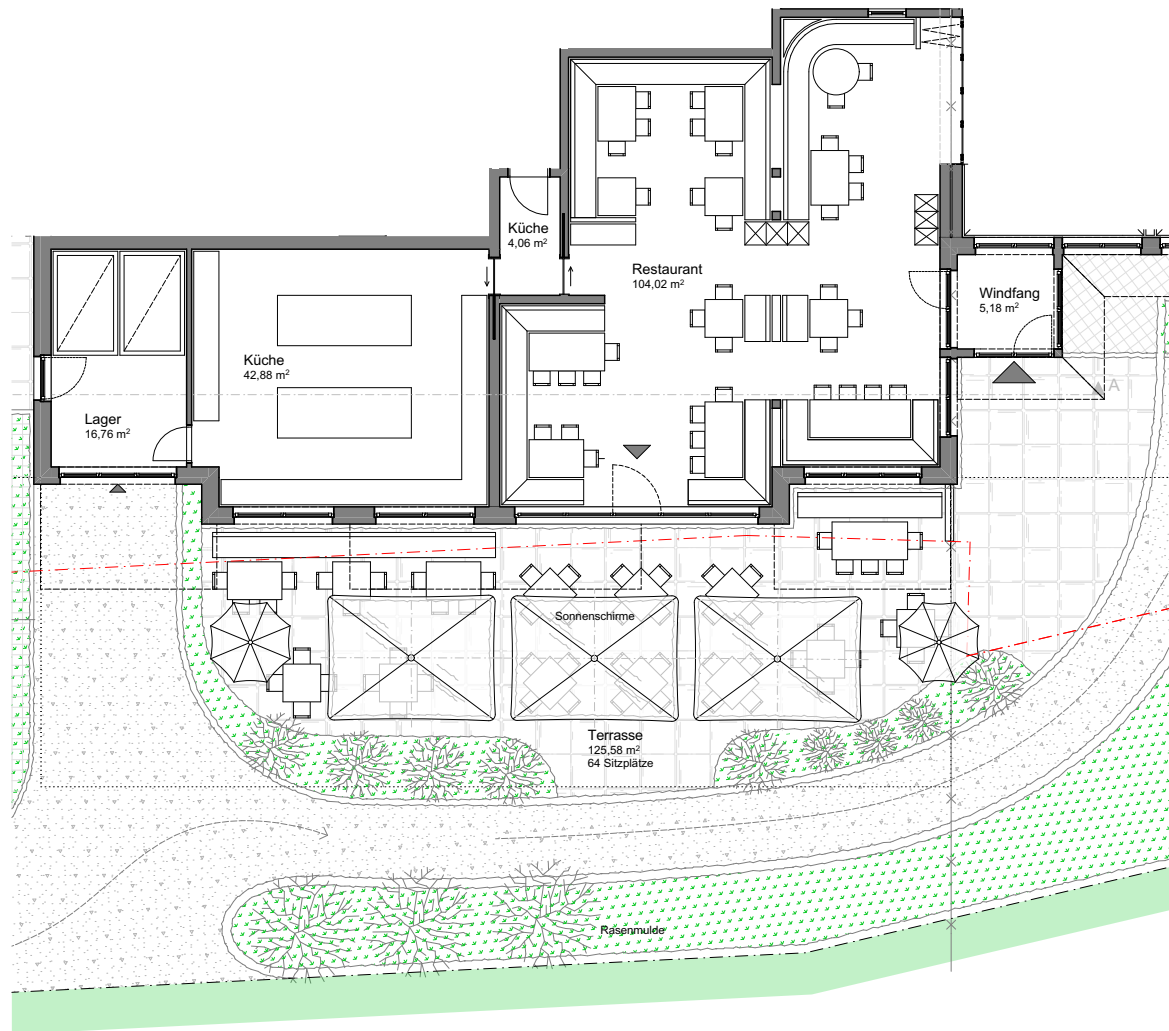
Wellness Overview



Wellness
141,69 m²

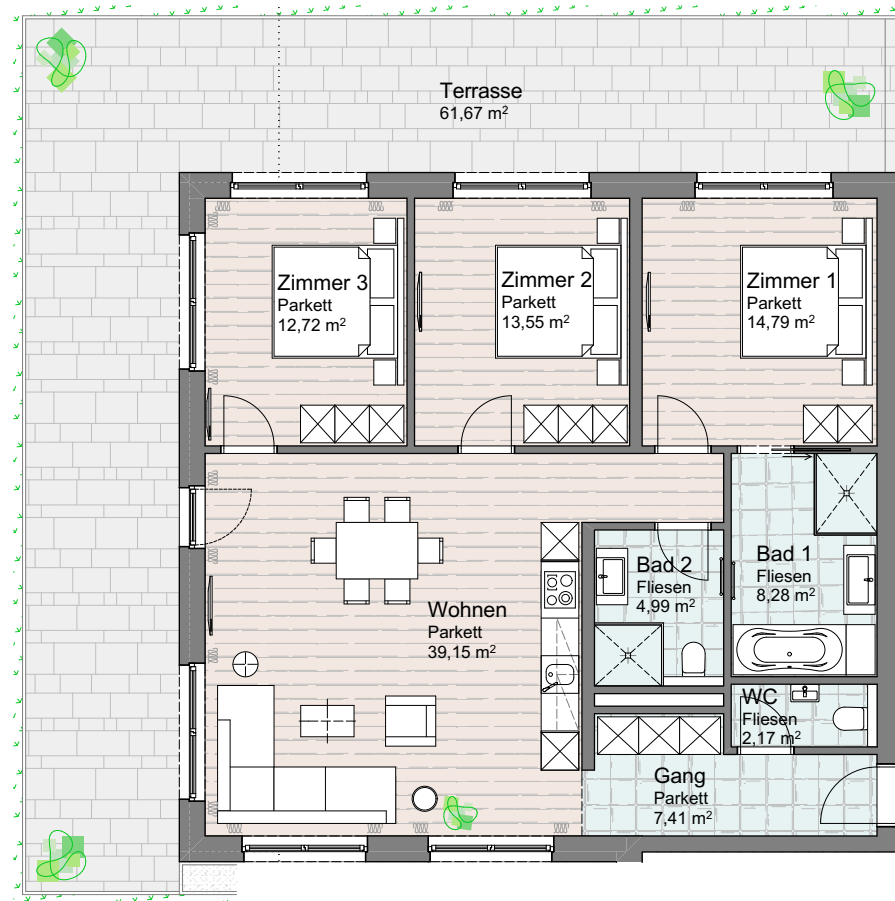
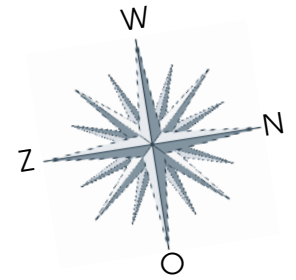


Restaurant Overview



Apartment TOP 01 Ground floor

6P Approx. 104 m² (excluding storage).

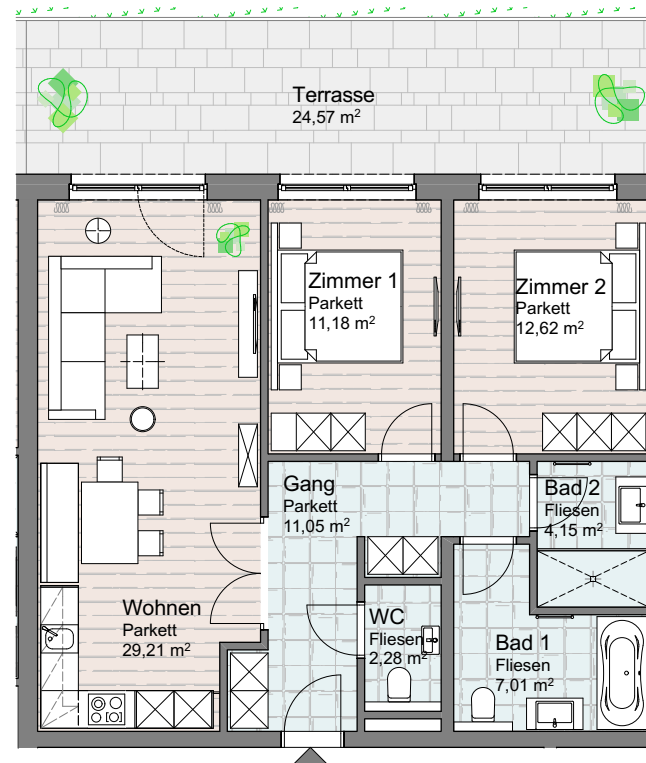
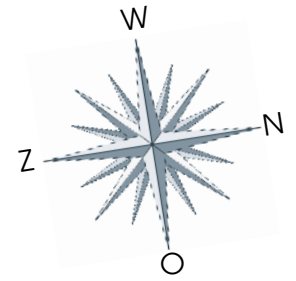


- Spacious corner apartment facing south-west (open view on 3 sides)
- Large terrace on the south-west side (approx. 61 m²)
- Includes terrace furniture
- Spacious living room of 39 m² with patio doors to terrace
- Luxury designer kitchen with A-brand appliances
- Three spacious bedrooms all with access to terrace
- Two luxurious bathrooms, one with bathtub and one with toilet
- Separate toilet
- Includes luxurious furnishings
- Multiple Smart TVs and one soundbar
- Fast wireless internet and full package TV. Broadcasters (among others Dutch)
- Intercom
- 2 parking spaces.

The specified m² concerns the interior dimensions of the houses excluding walls.

Apartment TOP 02 Ground floor

4P Approx. 77.5 m² (excluding storage).

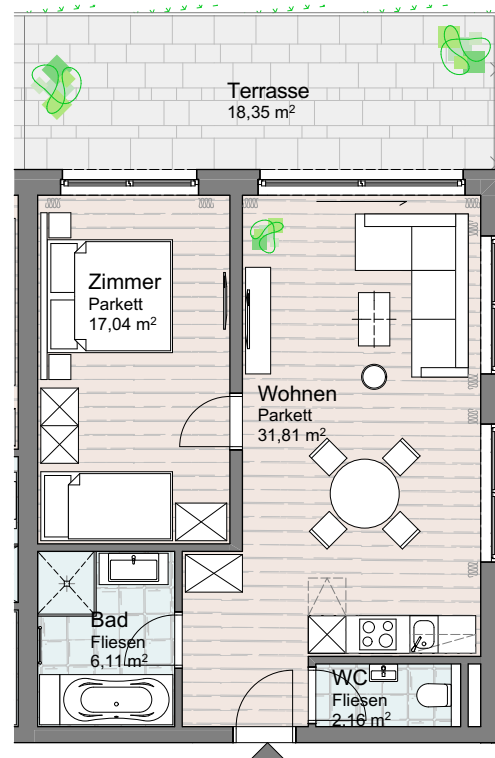
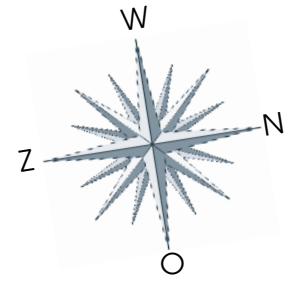


- West-facing apartment for 4 people
- Beautiful west-facing terrace (approx. 24 m²)
- Includes terrace furniture
- Spacious living room of approx. 29 m² with patio doors to terrace
- Luxury designer kitchen with A-brand appliances
- Two spacious bedrooms both with access to terrace
- Two luxurious bathrooms, one with bathtub and one with toilet
- Separate toilet
- Includes luxurious furnishings
- Multiple Smart TVs and one soundbar
- Fast wireless internet and full package TV. Broadcasters (among others Dutch)
- Intercom
- 1 parking space.

The specified m² concerns the interior dimensions of the houses excluding walls.

Apartment TOP 03 Ground floor

4P Approx. 57 m² (excluding storage).

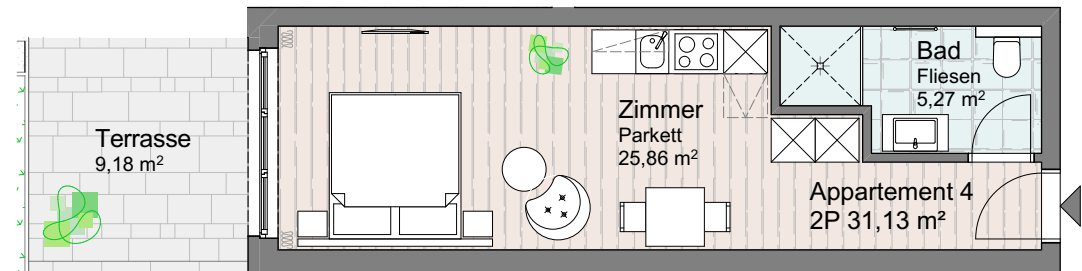
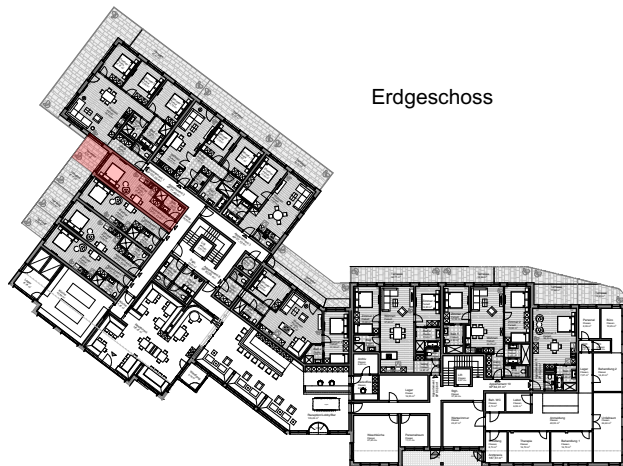
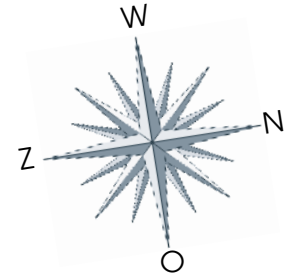


- Spacious west-facing one bedroom apartment
- Beautiful west-facing terrace (approx. 18 m²)
- Includes terrace furniture
- Spacious living room of 31 m² with access to terrace
- Design kitchen with A-brand appliances
- Bedroom with double bed and bunk bed
- Luxurious bathroom with shower and bath
- Separate toilet
- Includes luxurious furnishings
- Multiple Smart TVs and one soundbar
- Fast wireless internet and full package TV. Broadcasters (among others Dutch)
- Intercom
- 1 parking space.

The specified m² concerns the interior dimensions of the houses excluding walls.

Apartment TOP 04 Ground floor

2P Ca. 31 m² (excluding storage).

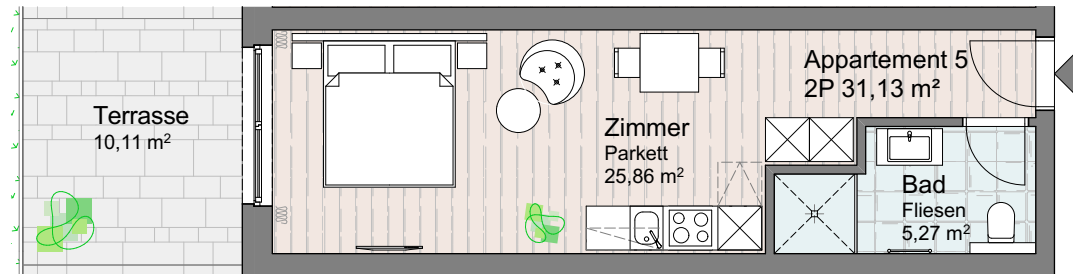
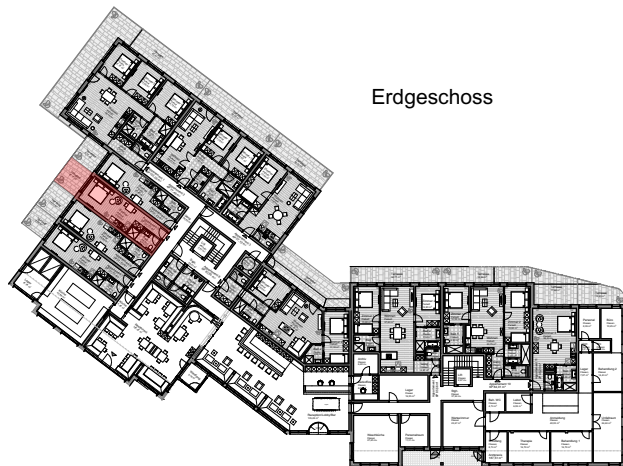
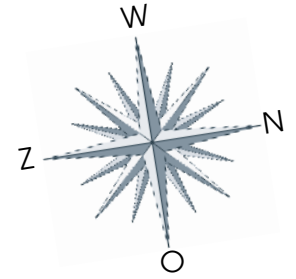


- Highly space-efficient apartment facing south-west • Beautiful terrace facing south-west (approx. 9 m²) • Includes terrace furniture
- Spacious living room of approx. 25 m² with access to the terrace • Design kitchen with A-brand appliances • Double bed • Luxury bathroom with shower and toilet • Includes luxurious furnishings • Smart TV and one soundbar • Fast wireless internet and full package TV. Broadcasters (among others Dutch) • Intercom • 1 parking space.

The specified m² concerns the interior dimensions of the houses excluding walls.

Apartment TOP 05 Ground floor

2P Ca. 31 m² (excluding storage).

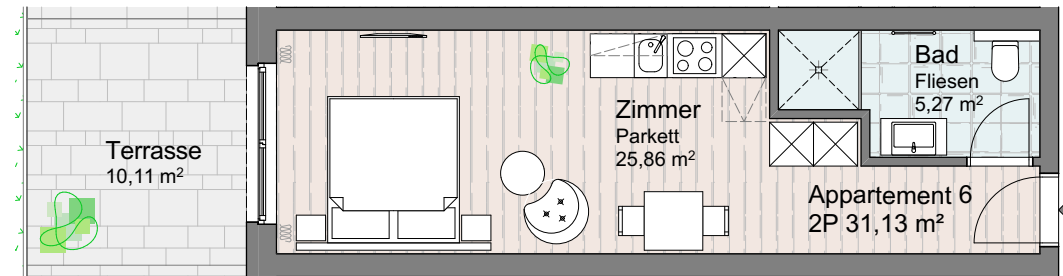
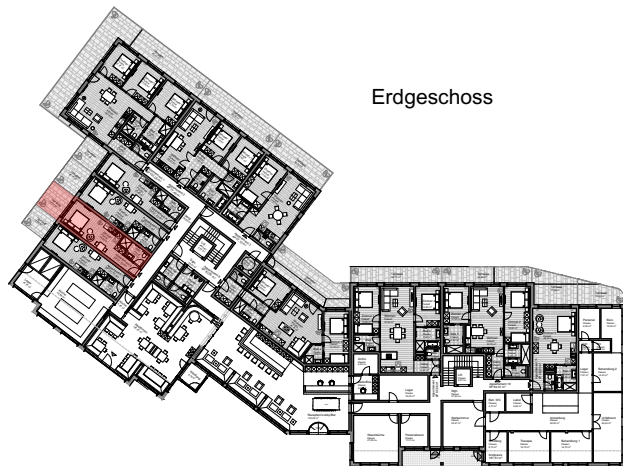
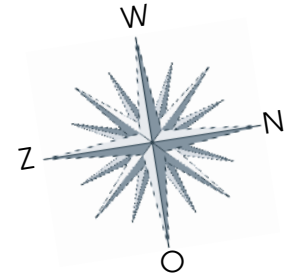


- Highly space-efficient apartment facing south-west
- Beautiful terrace facing south-west (approx. 10 m²)
- Includes terrace furniture
- Spacious living room of approx. 25 m² with access to the terrace
- Design kitchen with A-brand appliances
- Double bed
- Luxurious bathroom with shower and toilet
- Includes luxurious furnishings
- Smart TV and one soundbar
- Fast wireless internet and full package TV. Broadcasters (among others Dutch)
- Intercom
- 1 parking space.

The specified m² concerns the interior dimensions of the houses excluding walls.

Apartment TOP 06 Ground floor

2P Ca. 31 m² (excluding storage).

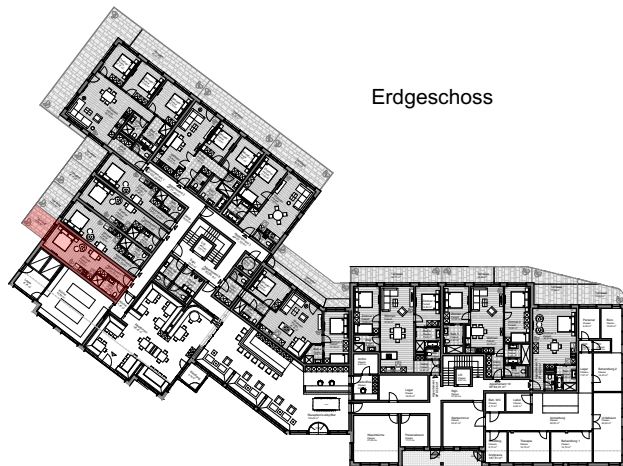
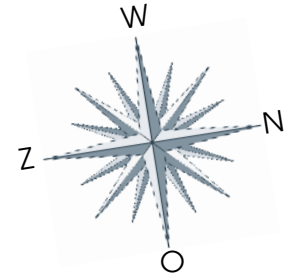


- Highly space-efficient apartment south-west facing apartment • Nice terrace facing west (approx. 10 m²) • Includes terrace furniture
- Spacious living room of approx. 25 m² with access to the terrace • Design kitchen with A-brand appliances • Double bed • Luxury bathroom with shower and toilet • Includes luxurious furnishings • Smart TV and one soundbar • Fast wireless internet and full package TV. Broadcasters (among others Dutch) • Intercom • 1 parking space.

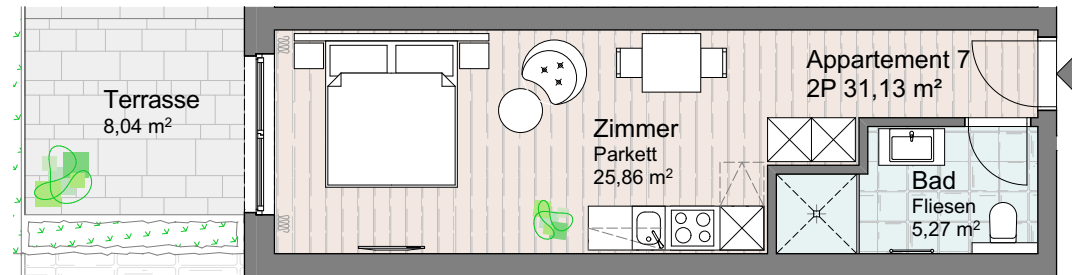
The specified m² concerns the interior dimensions of the houses excluding walls.

Apartment TOP 07 Ground floor

2P Ca. 31 m² (excluding storage).



Erdgeschoss

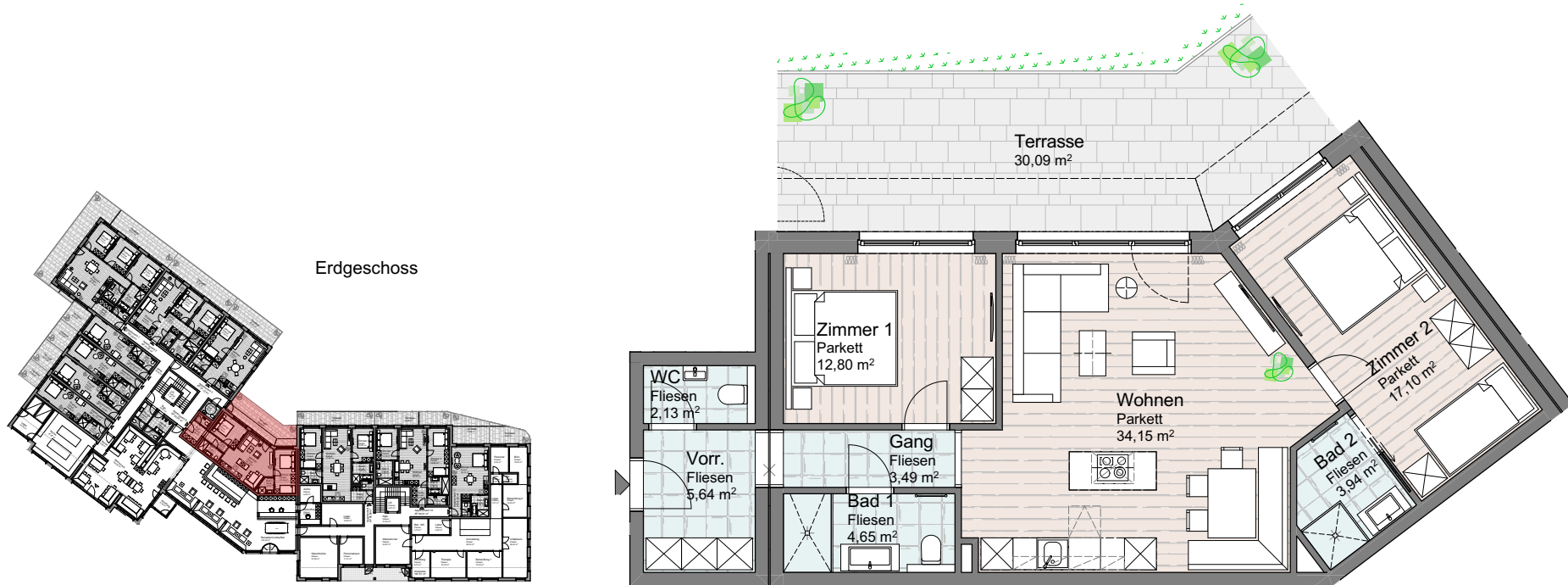
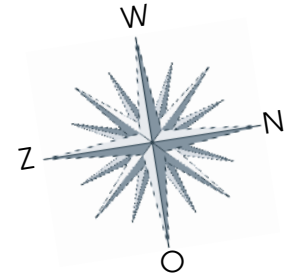


- Highly space-efficient apartment facing south-west • Beautiful terrace facing south-west (approx. 8 m²) • Includes terrace furniture
- Spacious living room of approx. 25 m² with access to the terrace • Design kitchen with A-brand appliances • Double bed • Luxurious bathroom with shower and toilet • Includes luxurious furnishings • Smart TV and one soundbar • Fast wireless internet and full package TV. Broadcasters (among others Dutch) • Intercom • 1 parking space.

The specified m² concerns the interior dimensions of the houses excluding walls.

Apartment TOP 08 Ground floor

6P Approx. 84 m² (excluding storage).

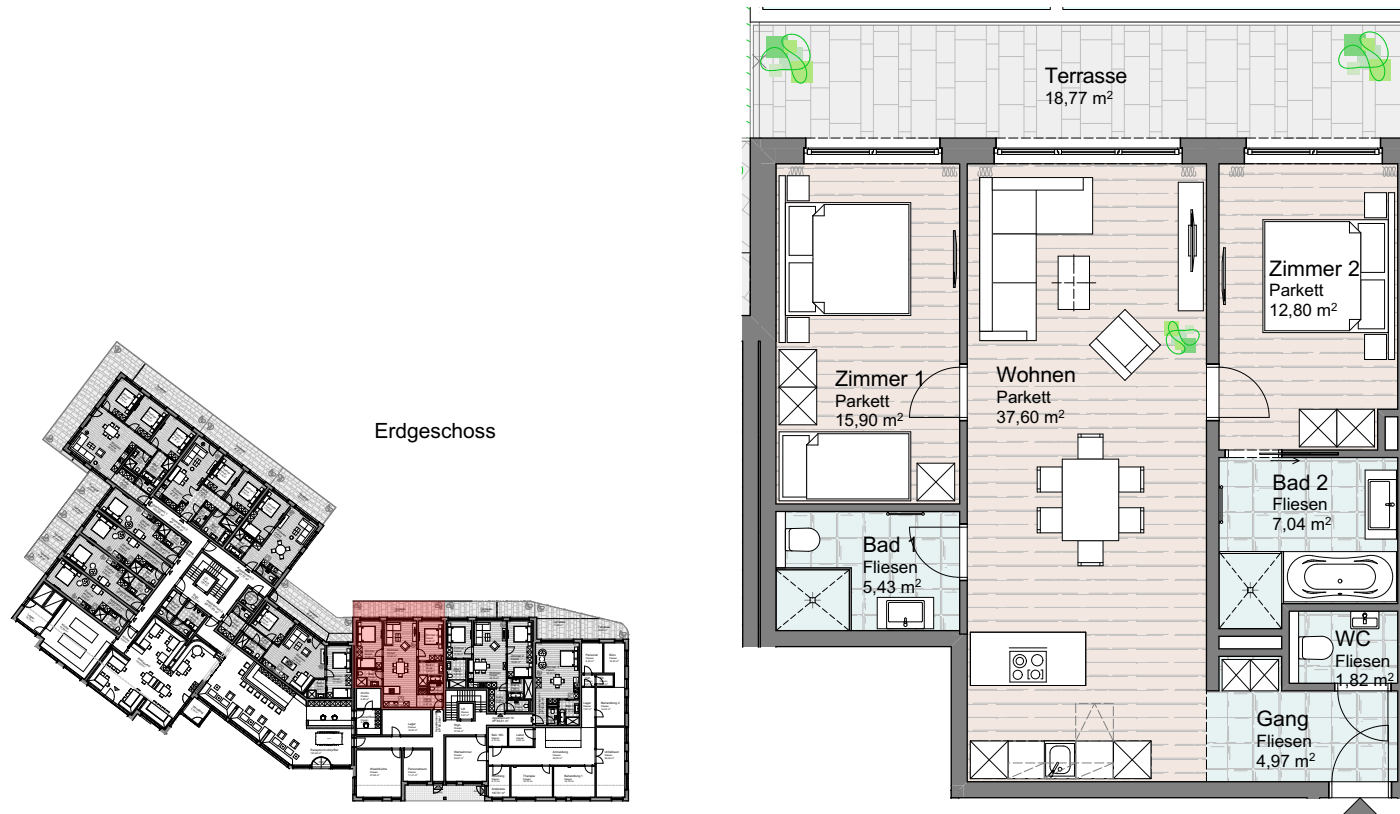
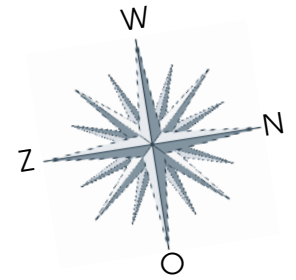


- Spacious west-facing apartment for 6 people
- Largest west-facing terrace (approx. 30 m²)
- Includes terrace furniture
- Spacious living room of approx. 34 m² with patio doors to terrace
- Luxury design kitchen with cooking island and A-brand appliances
- Two bedrooms, one with a bunk bed. Both have access to terrace
- Two luxurious bathrooms with shower and one with toilet
- Separate toilet
- Includes luxurious furnishings
- Multiple Smart TVs and one soundbar
- Fast wireless internet and full package TV. Broadcasters (among others Dutch)
- Intercom
- 2 parking spaces.

The specified m² concerns the interior dimensions of the houses excluding walls.

Apartment TOP 09 Ground floor

6P Approx. 85 m² (excluding storage).

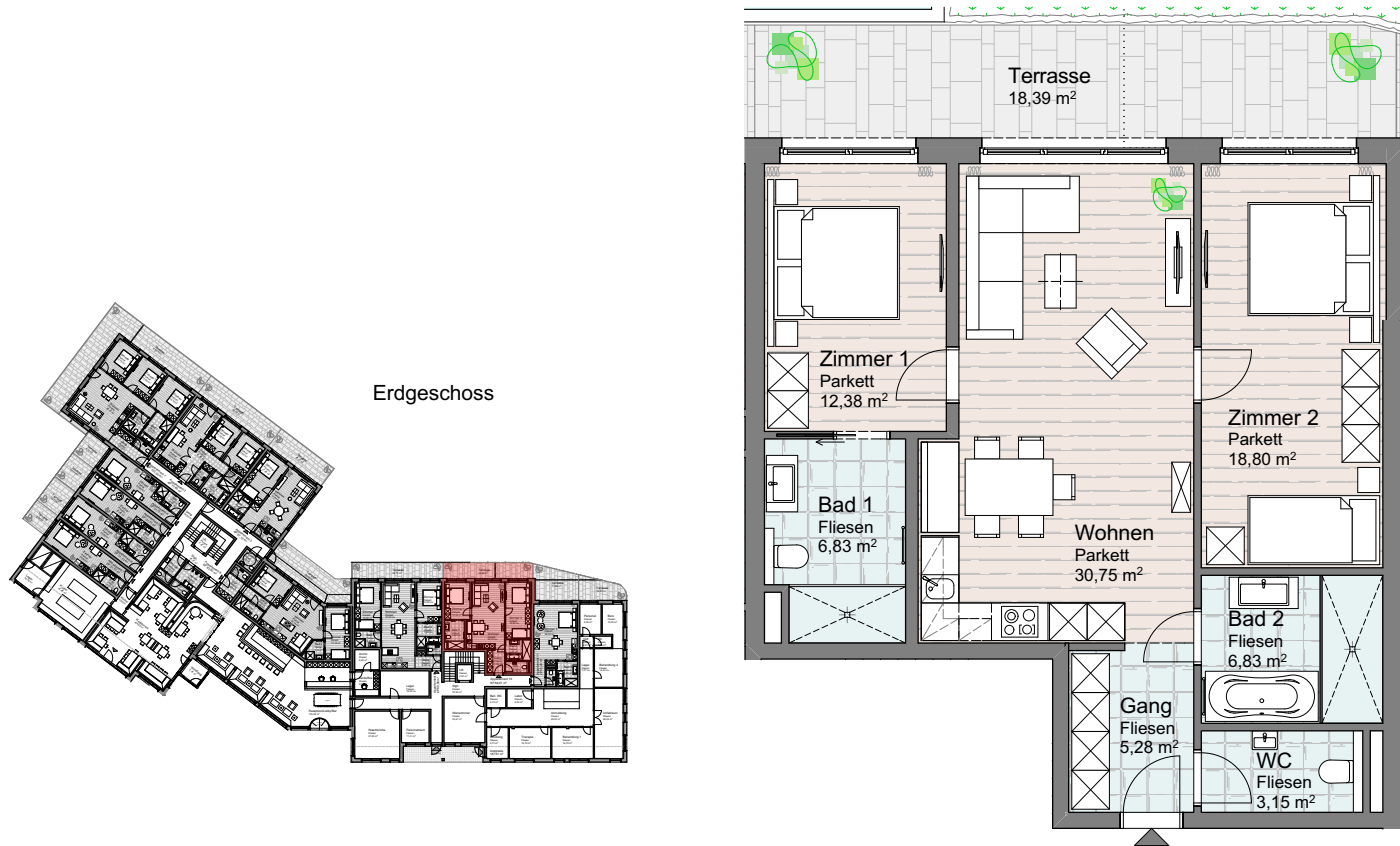
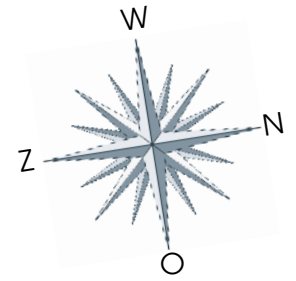


- Spacious west-facing apartment for 6 people
- Nice west-facing terrace (approx. 18 m²)
- Includes terrace furniture
- Spacious living room of approx. 37 m² with access to terrace
- Luxury design kitchen with cooking island and A-brand appliances
- Two bedrooms, one with bunk bed. Both have access to terrace
- Two luxurious bathrooms, one with bathtub and one with toilet
- Separate toilet
- Includes luxurious furnishings
- Multiple Smart TVs and one soundbar
- Fast wireless internet and full package TV. Broadcasters (among others Dutch)
- Intercom
- 2 parking spaces.

The specified m² concerns the interior dimensions of the houses excluding walls.

Apartment TOP 10 Ground floor

6P Approx. 84 m² (excluding storage).

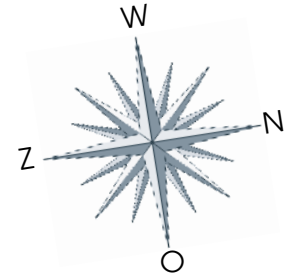
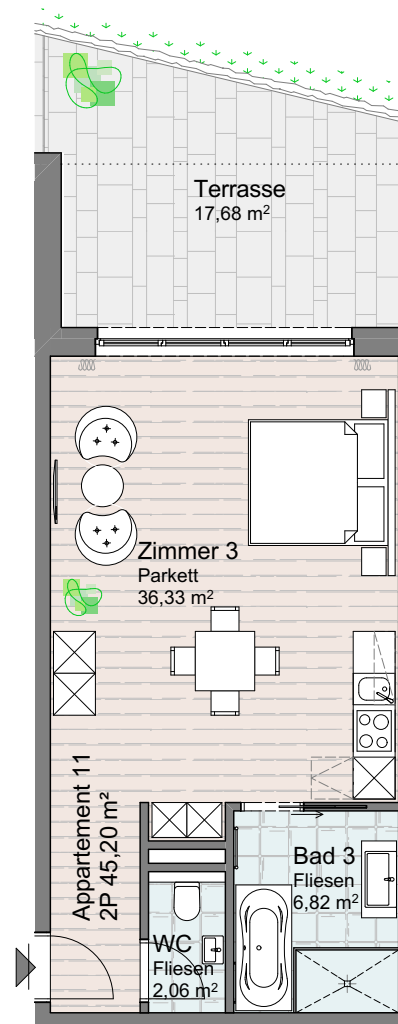
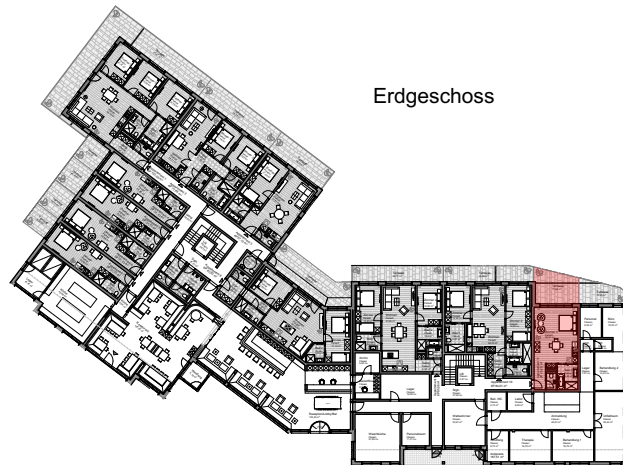


- Spacious west-facing apartment for 6 people
- Spacious west-facing terrace (approx. 18 m²)
- Includes terrace furniture
- Spacious living room of approx. 30 m² with access to terrace
- Luxury designer kitchen with A-brand appliances
- Two bedrooms, one with a bunk bed. Both have access to terrace
- Two luxurious bathrooms, one with bathtub and one with toilet
- Separate toilet
- Includes luxurious furnishings
- Multiple Smart TVs and one soundbar
- Fast wireless internet and full package TV. Broadcasters (among others Dutch)
- Intercom
- 2 parking spaces.

The specified m² concerns the interior dimensions of the houses excluding walls.

Apartment TOP 11 Ground floor

2P Ca. 45 m² (excluding storage).

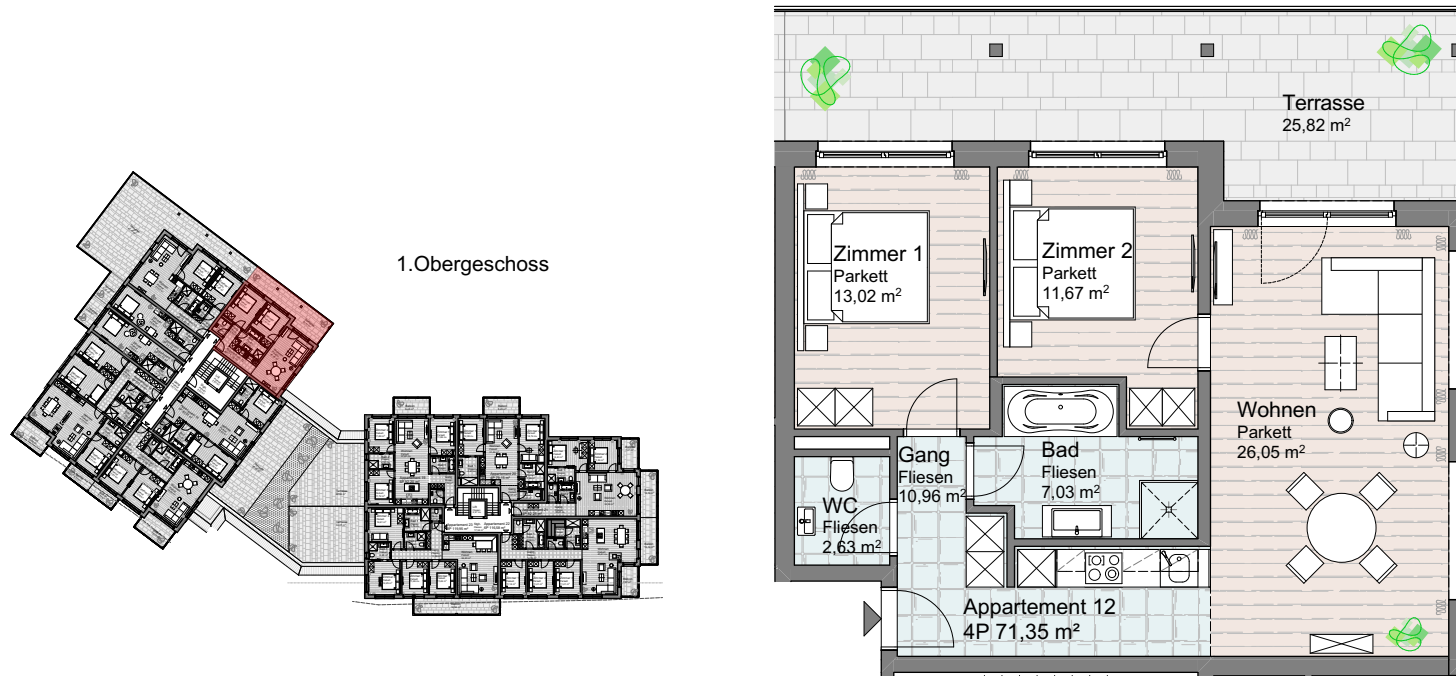
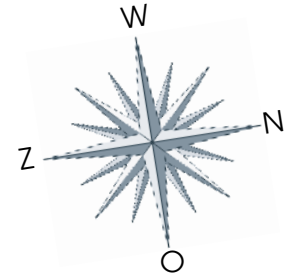


- Extremely efficiently apartment on the west
- Nice west-facing terrace (approx. 17 m²)
- Includes terrace furniture
- Spacious living room of approx. 36 m² with access to terrace
- Design kitchen with A-brand appliances
- Double bed
- Luxurious bathroom with shower and bath
- Separate toilet
- Includes luxurious furnishings
- Smart TV and one soundbar
- Fast wireless internet and full package TV, Broadcasters (among others Dutch)
- Intercom
- 1 parking space.

The specified m² concerns the interior dimensions of the houses excluding walls.

Apartment TOP 12 First floor

4P Approx. 71 m² (excluding storage).

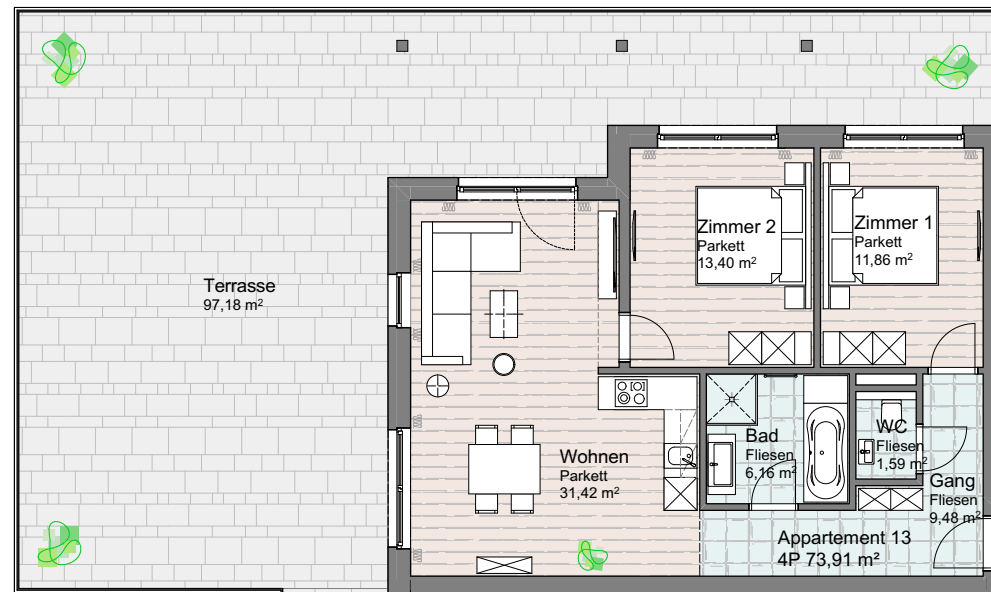
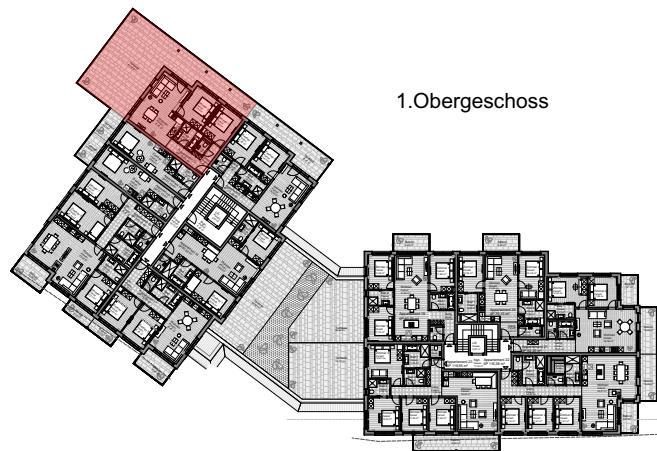
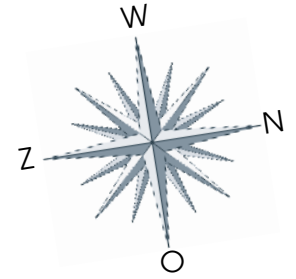


- Spacious west-facing apartment for 4 people
- Spacious west-facing terrace (approx. 25 m²)
- Includes terrace furniture
- Spacious living room of approx. 26 m² with patio doors to terrace
- Design kitchen with A-brand appliances
- Two bedrooms with balcony access or terrace
- Luxury bathroom with shower and bath
- Separate toilet
- Includes luxurious furnishings
- Multiple Smart TVs and one soundbar
- Fast wireless internet and full package TV. Broadcasters (among others Dutch)
- Intercom
- 1 parking space.

The specified m² concerns the interior dimensions of the houses excluding walls.

Apartment TOP 13 First floor

4P Approx. 73 m² (excluding storage).

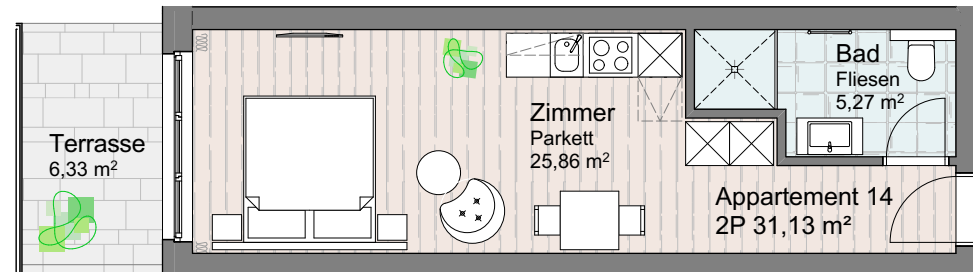
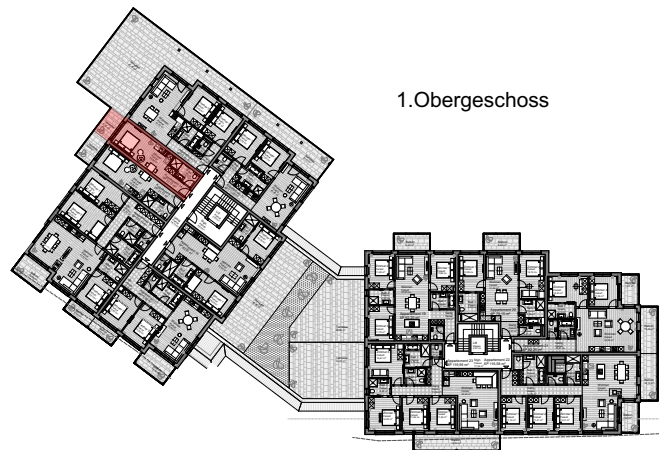
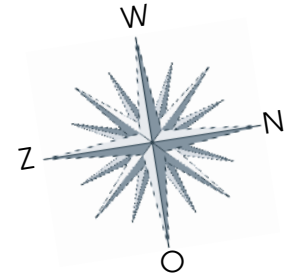


- Spacious south-west facing apartment for 4 people • Beautiful terrace facing south-west (approx. 97 m²) • Includes terrace furniture
- Spacious living room of approx. 31 m² with patio doors to terrace • Luxury designer kitchen with A-brand appliances • Two bedrooms with balcony access or terrace • Luxurious bathroom with shower and bath • Separate toilet • Includes luxurious furnishings • Multiple Smart TVs and one soundbar • Fast wireless internet and full package TV. Broadcasters (among others Dutch) • Intercom • 1 parking space.

The specified m² concerns the interior dimensions of the houses excluding walls.

Apartment TOP 14 First floor

2P Approx. 31 m² (excluding storage).

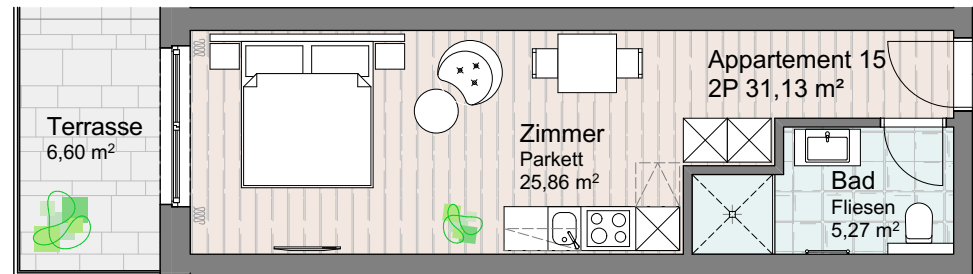
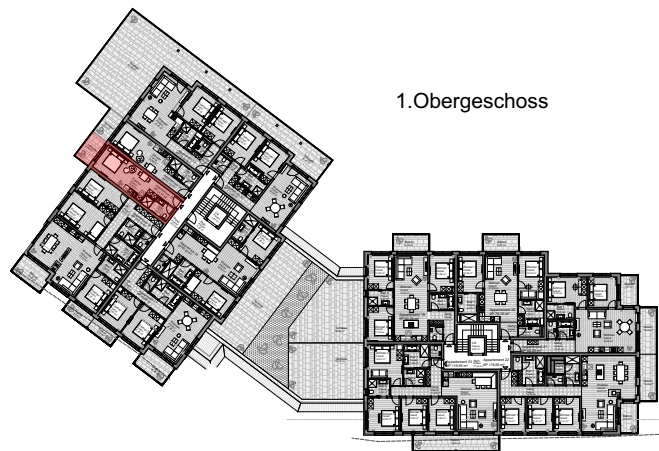
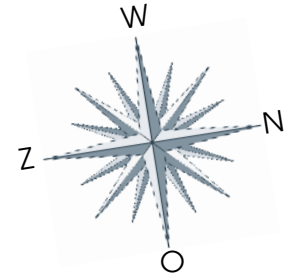


- Extremely space-efficient apartment facing south-west • Beautiful terrace facing south-west (approx. 6 m²) • Includes terrace furniture
- Spacious living room of approx. 25 m² with access to the terrace • Design kitchen with A-brand appliances • Double bed • Luxury bathroom with shower and toilet • Includes luxurious furnishings • Smart TV and one soundbar • Fast wireless internet and full package TV. Broadcasters (among others Dutch) • Intercom • 1 parking space.

The specified m² concerns the interior dimensions of the houses excluding walls.

Apartment TOP 15 First floor

2P Ca. 31 m² (excluding storage).

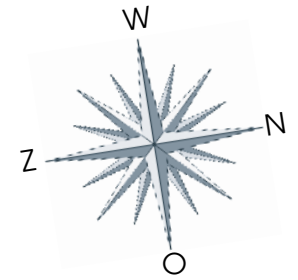
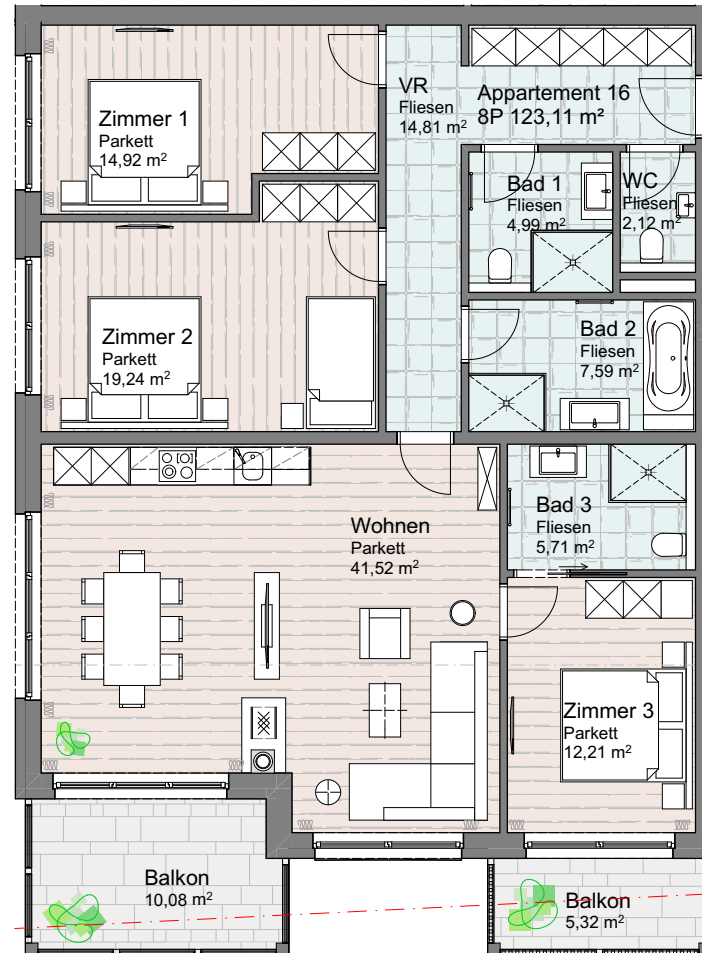
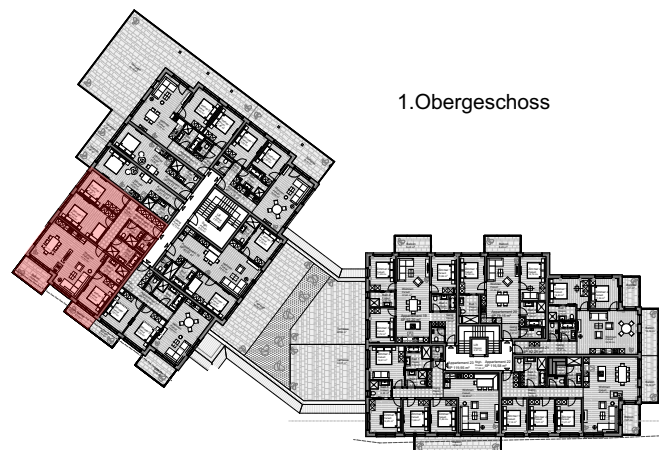


- Extremely space-efficient apartment facing south-west • Beautiful terrace facing south-west (approx. 6 m²) • Includes terrace furniture
- Spacious living room of approx. 25 m² with access to the terrace • Design kitchen with A-brand appliances • Double bed • Luxurious bathroom with shower and toilet • Includes luxurious furnishings • Smart TV and one soundbar • Fast wireless internet and full package TV. Broadcasters (among others Dutch) • Intercom • 1 parking space.

The specified m² concerns the interior dimensions of the houses excluding walls.

Apartment TOP 16 First floor

8P Approx. 123 m² (excluding storage).

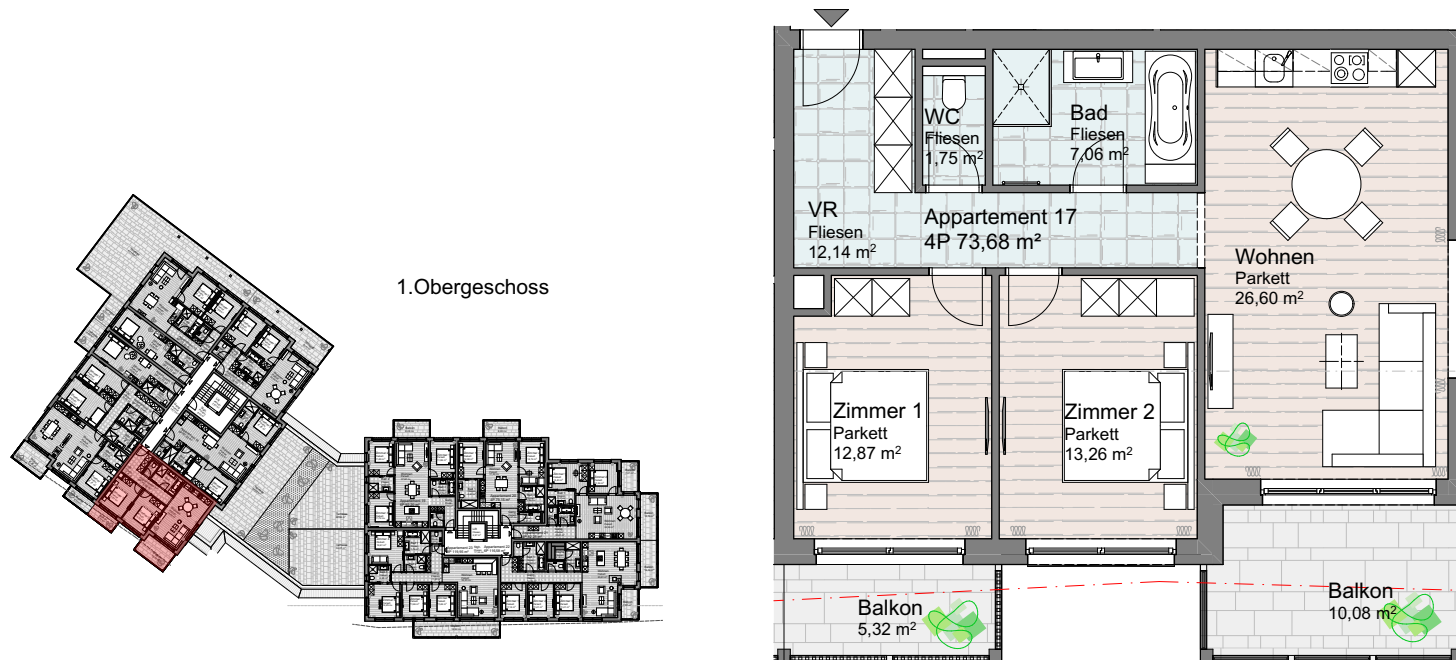
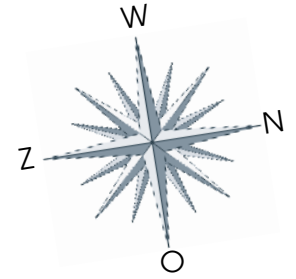


- Spacious apartment facing south-east for 8 people
- Two beautiful balconies facing south-east (approx. 10 m² and 5 m², respectively)
- Includes terrace furniture
- Spacious living room of 41 m² with balcony access
- Luxury designer kitchen with A-brand appliances
- Three bedrooms, one with a bunk bed
- Three luxurious bathrooms, one with a bathtub
- Separate toilet
- Includes luxurious furnishings
- Multiple Smart TVs and one soundbar
- Fast wireless internet and full package TV. Broadcasters (among others Dutch)
- Intercom
- 2 parking spaces.

The specified m² concerns the interior dimensions of the houses excluding walls.

Apartment TOP 17 First floor

4P Approx. 73 m² (excluding storage).

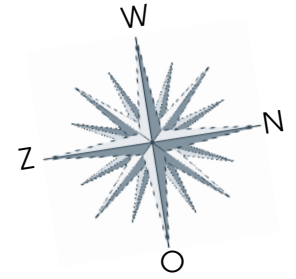
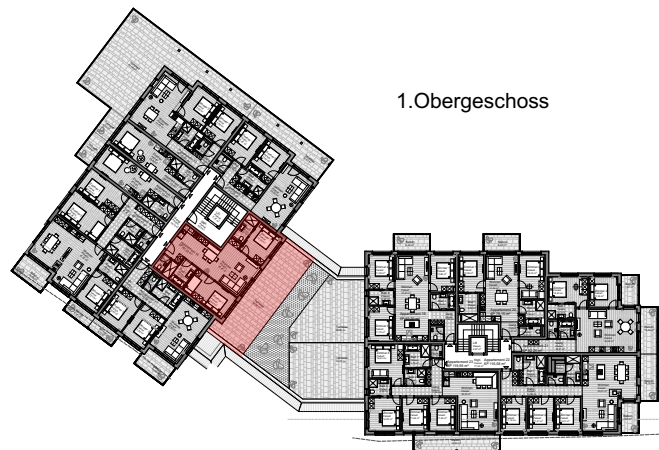


- Beautiful apartment for 4 people facing south-east
- Two balconies facing south-east (approx. 5 m² and 10 m², respectively)
- Includes terrace furniture
- Spacious living room of approx. 26 m² with balcony access
- Design kitchen with A-brand appliances
- Two bedrooms, one with balcony access.
- Luxurious bathroom with shower and bath
- Separate toilet
- Includes luxurious furnishings
- Multiple Smart TVs and one soundbar
- Fast wireless internet and full package TV. Broadcasters (among others Dutch)
- Intercom
- 1 parking space.

The specified m² concerns the interior dimensions of the houses excluding walls.

Apartment TOP 18 First floor

6P Approx. 82 m² (excluding storage).

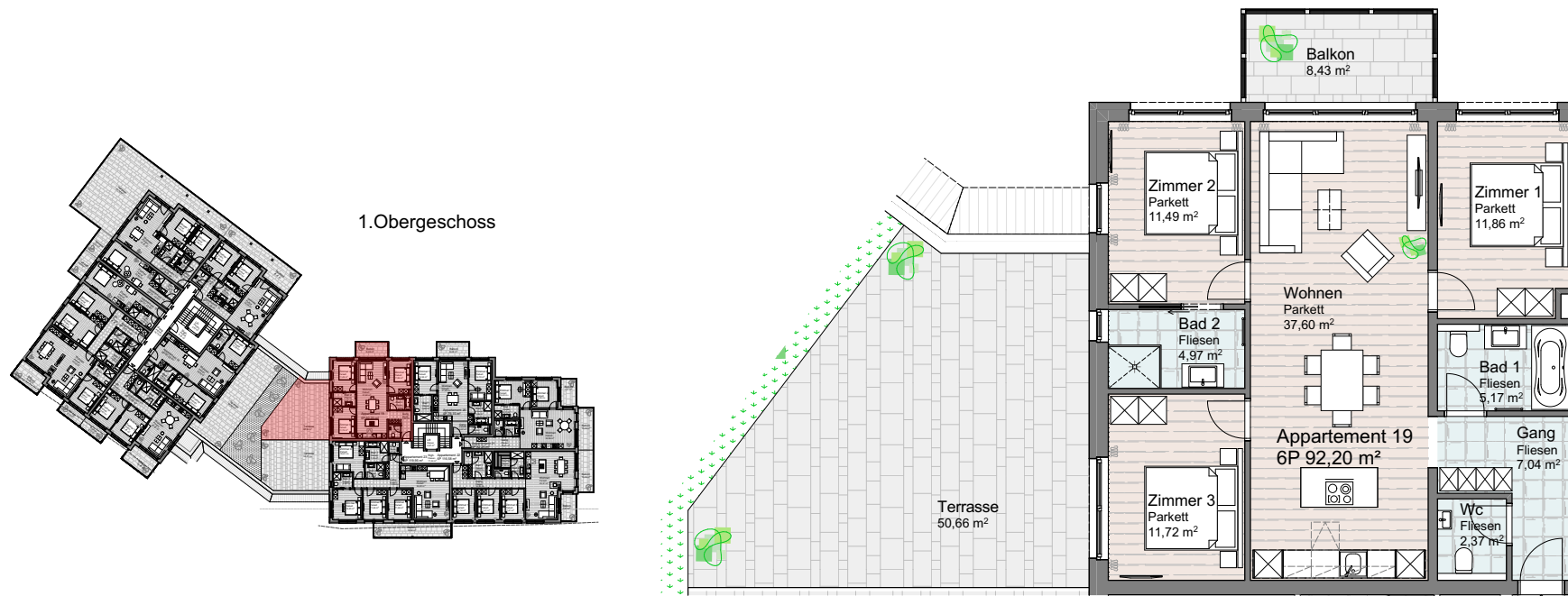
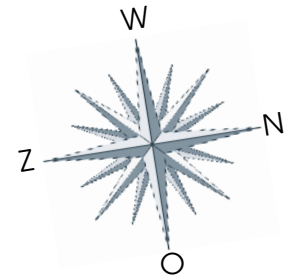


- Spacious apartment facing north-west for 6 people • Beautiful terrace facing north-west (approx. 54 m²) • Includes terrace furniture
- Spacious living room of approx. 39 m² with access to terrace • Luxury designer kitchen with A-brand appliances • Two bedrooms, one with a bunk bed. Both have access to terrace • Two luxurious bathrooms, one with bathtub and one with toilet • Separate toilet
- Includes luxurious furnishings • Multiple Smart TVs and one soundbar • Fast wireless internet and full package TV. Broadcasters (among others Dutch) • Intercom • 2 parking spaces.

The specified m² concerns the interior dimensions of the houses excluding walls.

Apartment TOP 19 First floor

6P Approx. 92 m² (excluding storage).

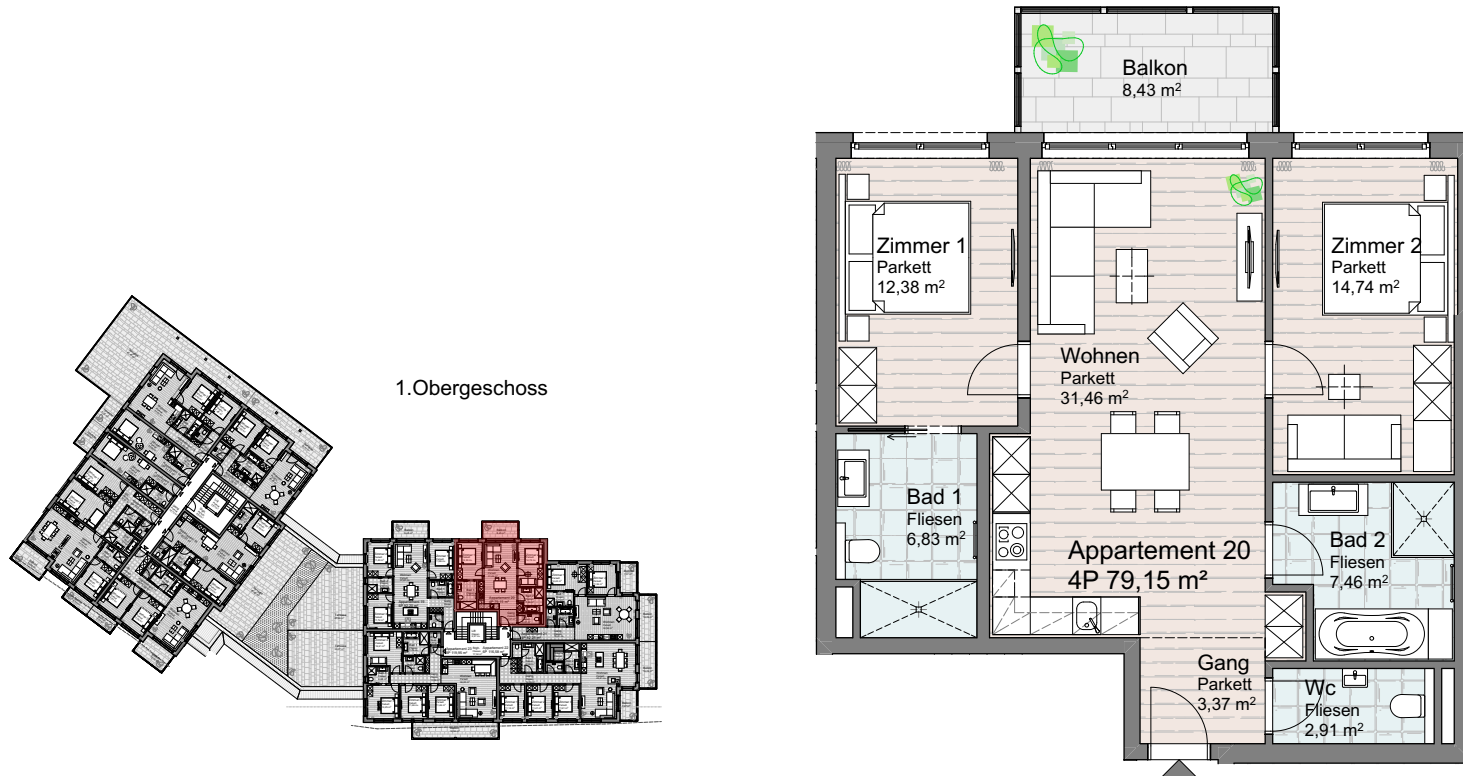
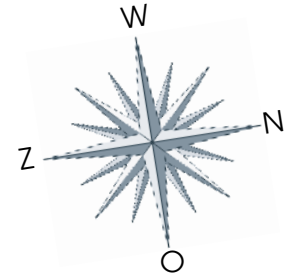


- Spacious apartment facing north-west for 6 people
- Beautiful terrace facing north-west (approx. 50 m²) and balcony facing west (approx. 8 m²)
- Includes terrace furniture
- Spacious living room of approx. 37 m² with access to terrace
- Luxury design kitchen with cooking island and A-brand appliances
- Three bedrooms, one with access to terrace
- Two luxurious bathrooms, one with bathtub and toilet
- Separate toilet
- Includes luxurious furnishings
- Multiple Smart TVs and one soundbar
- Fast wireless internet and full package TV. Broadcasters (among others Dutch)
- Intercom
- 2 parking spaces.

The specified m² concerns the interior dimensions of the houses excluding walls.

Apartment TOP 20 First floor

4P Approx. 79 m² (excluding storage).

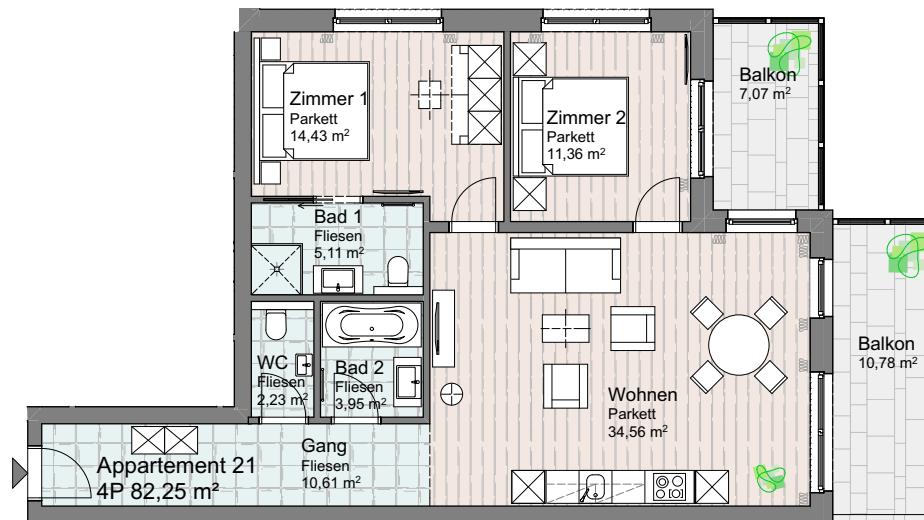
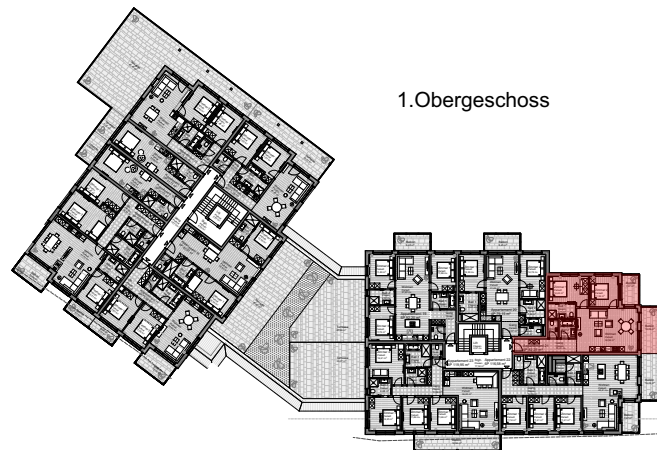
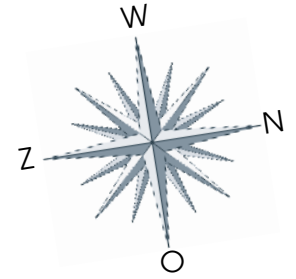


- Beautiful apartment for 4 people facing west • A balcony facing west (approx. 8 m²) • Includes terrace furniture • Spacious living room of approx. 31 m² with balcony access • Luxury designer kitchen with A-brand appliances • Two bedrooms • Two luxurious bathrooms, one with bathtub and one with toilet • Separate toilet • Includes luxurious furnishings • Multiple Smart TVs and one soundbar • Fast wireless internet and full package TV. Broadcasters (among others Dutch) • Intercom • 1 parking space.

The specified m² concerns the interior dimensions of the houses excluding walls.

Apartment TOP 21 First floor

4P Approx. 82 m² (excluding storage).

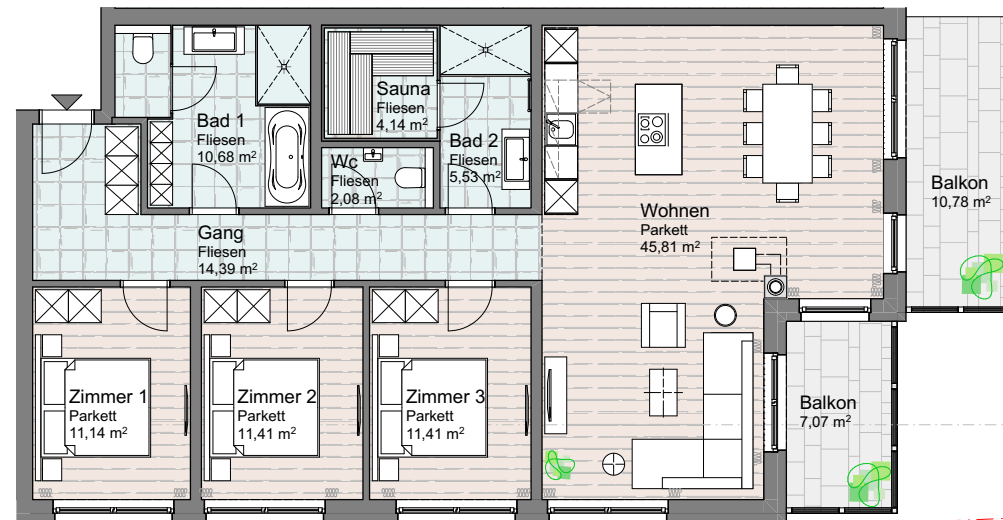
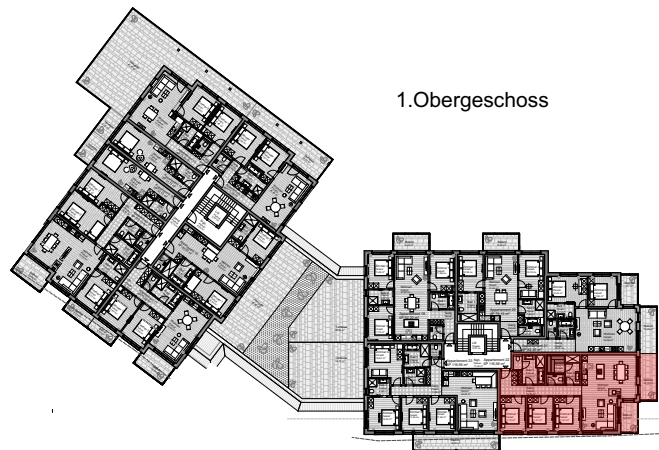
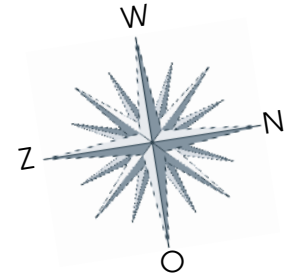


- Beautiful apartment for 4 people facing north-west • One balcony facing west (approx. 7 m²) and one balcony facing north (approx. 10 m²) • Includes terrace furniture • Spacious living room of approx. 34 m² with balcony access • Luxury designer kitchen with A-brand appliances • Two bedrooms • Two luxurious bathrooms, one with bathtub and one with toilet • Separate toilet • Includes luxurious furnishings • Multiple Smart TVs and one soundbar • Fast wireless internet and full package TV. Broadcasters (among others Dutch)
- Intercom • 1 parking space.

The specified m² concerns the interior dimensions of the houses excluding walls.

Apartment TOP 22 First floor

6P Approx. 116 m² (excluding storage).

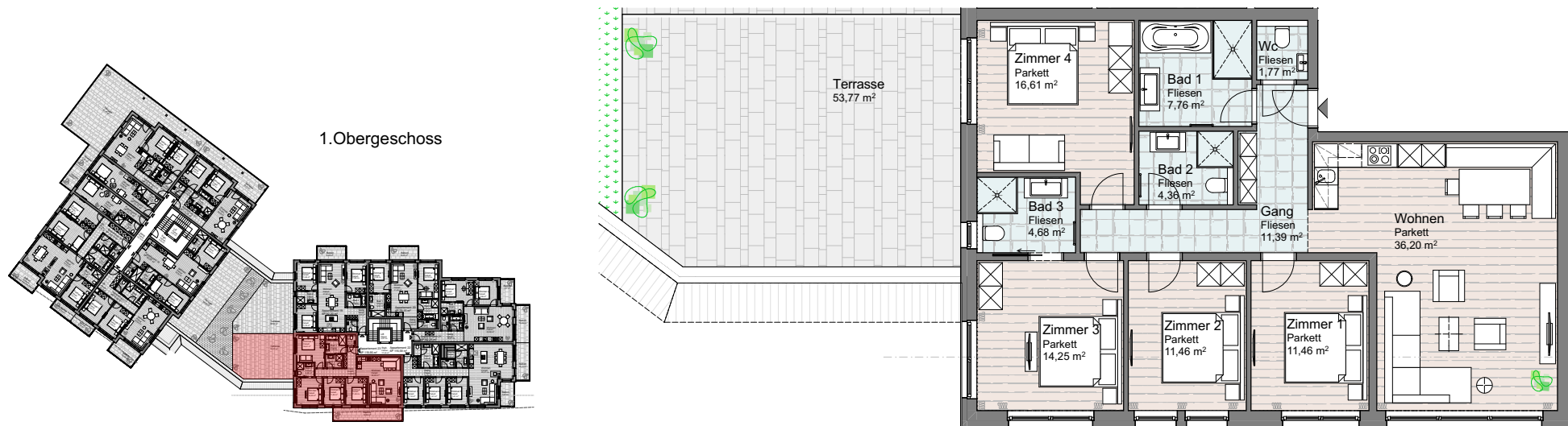
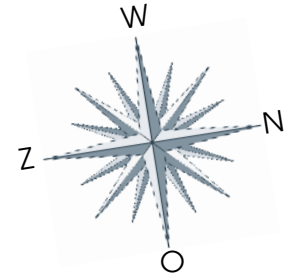


- Large apartment facing north-east for 6 people
- Two balconies, one facing north-east (approx. 10 m²) and one balcony facing west (approx. 7 m²)
- Includes garden furniture
- Spacious living room of approx. 45 m² with access to terrace
- Luxury design kitchen with cooking island and A-brand appliances
- Three bedrooms
- Two luxurious bathrooms, one with a sauna and one with a bathtub
- Separate toilet
- Includes luxurious furnishings
- Multiple Smart TVs and one soundbar
- Fast wireless internet and full package TV. Broadcasters (among others Dutch)
- Intercom
- 2 parking spaces.

The specified m² concerns the interior dimensions of the houses excluding walls.

Apartment TOP 23 First floor

8P Approx. 120 m² (excluding storage).

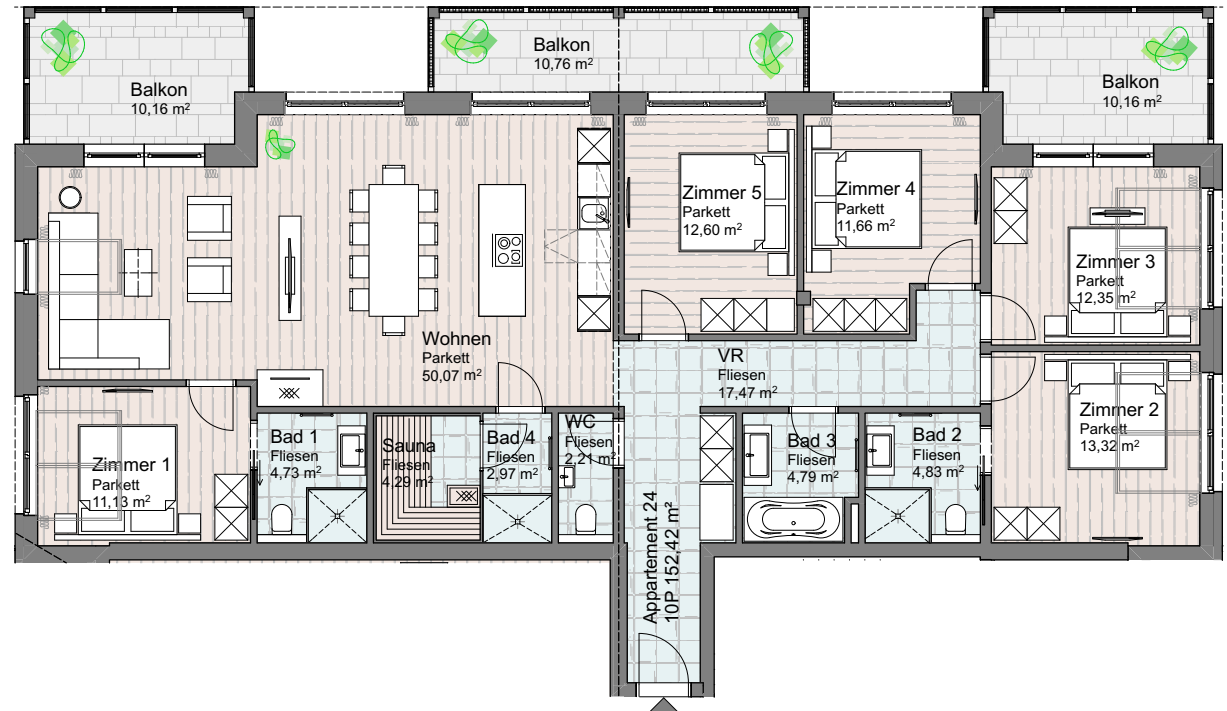
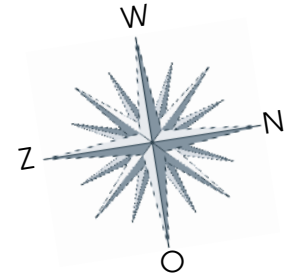


- Large apartment facing east for 8 people • Beautiful terrace facing east (approx. 53 m²) • Includes terrace furniture • Spacious living room of 36 m² • Luxury designer kitchen with A-brand appliances • Four bedrooms, one with access to terrace • Three luxurious bathrooms, one with bathtub and two with toilet • Separate toilet • Includes luxurious furnishings • Multiple Smart TVs and one soundbar • Fast wireless internet and full package TV. Broadcasters (among others Dutch) • Intercom • 2 parking spaces.

The specified m² concerns the interior dimensions of the houses excluding walls.

Apartment TOP 24 Penthouse

10P Approx. 152 m² (excluding storage).



- Beautiful apartment facing west for 10 people
- Three balconies facing south-west (all three approx. 10 m²)
- Includes terrace furniture
- Spacious living room of 50 m²
- Luxury design kitchen with cooking island and A-brand appliances
- Five bedrooms, two with access to terrace
- Four luxurious bathrooms, one with sauna, one with bathtub and two with toilet
- Separate toilet
- Includes luxurious furnishings
- Multiple Smart TVs and one soundbar
- Fast wireless internet and full package TV. Broadcasters (among others Dutch)
- Intercom
- 3 parking spaces.

The specified m² concerns the interior dimensions of the houses excluding walls.

Apartment TOP 25 Penthouse

14P Approx. 181 m² (excluding storage).

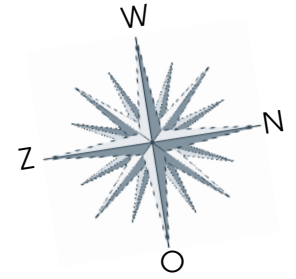
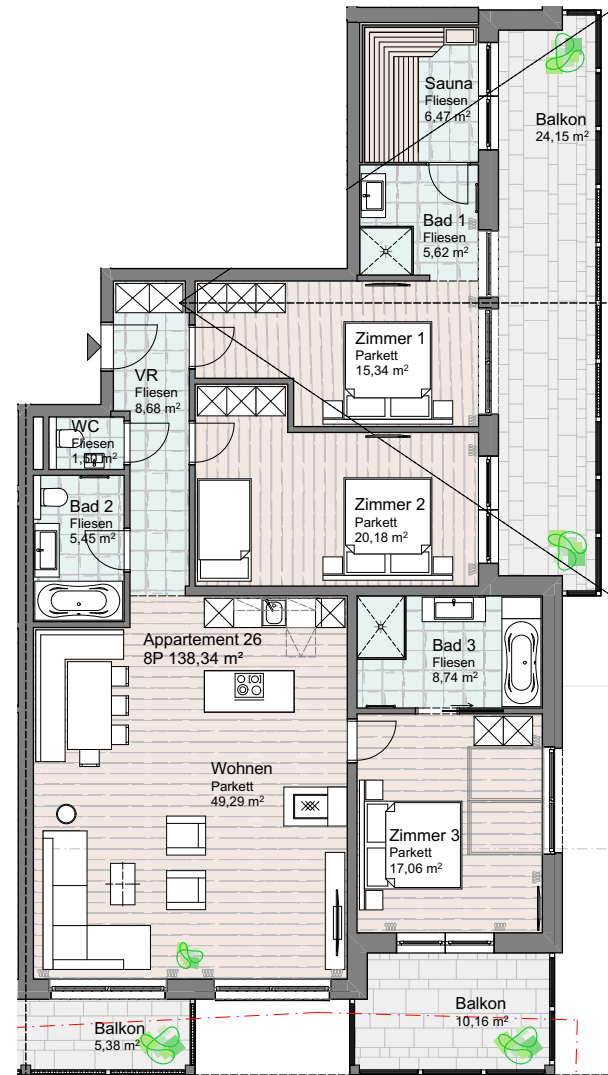


- Large apartment facing south-west for 14 people
- Three balconies, one facing south-west (approx. 22 m²) and two facing east (approx. 10 m² and 5 m²)
- Includes terrace furniture
- Spacious living room of 57 m² with balcony access
- Luxury design kitchen with cooking island and A-brand appliances
- Five bedrooms, two with balcony access
- Four luxurious bathrooms, one with sauna, one with bathtub and three with toilet
- Separate toilet
- Includes luxurious furnishings
- Multiple Smart TVs and one soundbar
- Fast wireless internet and full package TV. Broadcasters (among others Dutch)
- Intercom
- 5 parking spaces.

The specified m² concerns the interior dimensions of the houses excluding walls.

Apartment TOP 26 Penthouse

8P Approx. 138 m² (excluding storage).

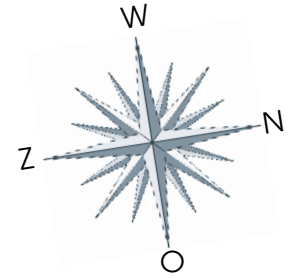


- Beautiful apartment facing north-east for 8 people
- Three balconies, one facing north (approx. 24 m²) and two facing east (approx. 5 m² and 10 m², respectively)
- Includes terrace furniture
- Spacious living room of 49 m²
- Luxury design kitchen with cooking island and A-brand appliances
- Three bedrooms, one with a bunk bed. All three featuring balcony access
- Three luxurious bathrooms, one with sauna and two with bathtub
- Separate toilet
- Includes luxurious furnishings
- Multiple Smart TVs and one soundbar
- Fast wireless internet and full package TV. Broadcasters (among others Dutch)
- Intercom
- 2 parking spaces.

The specified m² concerns the interior dimensions of the houses excluding walls.

Apartment TOP 27 Second floor

6P Approx. 92 m² (excluding storage).

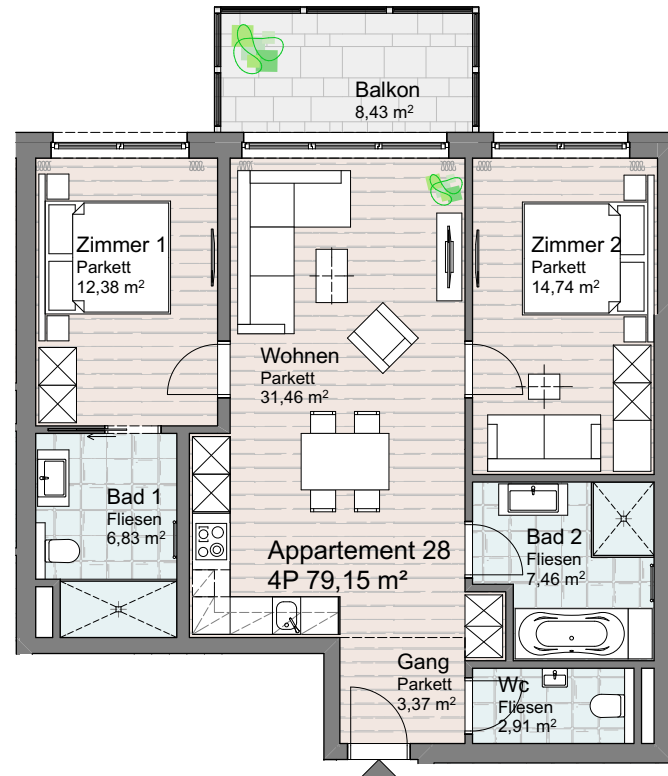
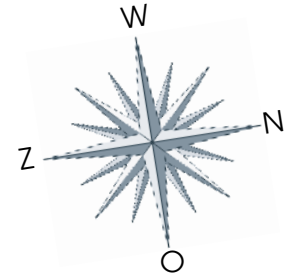


- Spacious apartment facing south-west for 6 people
- Two balconies facing south-west (both measuring approx. 8 m²)
- Includes terrace furniture
- Spacious living room of approx. 37 m² with access to terrace
- Luxury design kitchen with cooking island and A-brand appliances
- Three bedrooms
- Two luxurious bathrooms, one with bathtub and toilet
- Separate toilet
- Includes luxurious furnishings
- Multiple Smart TVs and one soundbar
- Fast wireless internet and full package TV. Broadcasters (among others Dutch)
- Intercom
- 2 parking spaces.

The specified m² concerns the interior dimensions of the houses excluding walls.

Apartment TOP 28 Second floor

4P Approx. 79 m² (excluding storage).

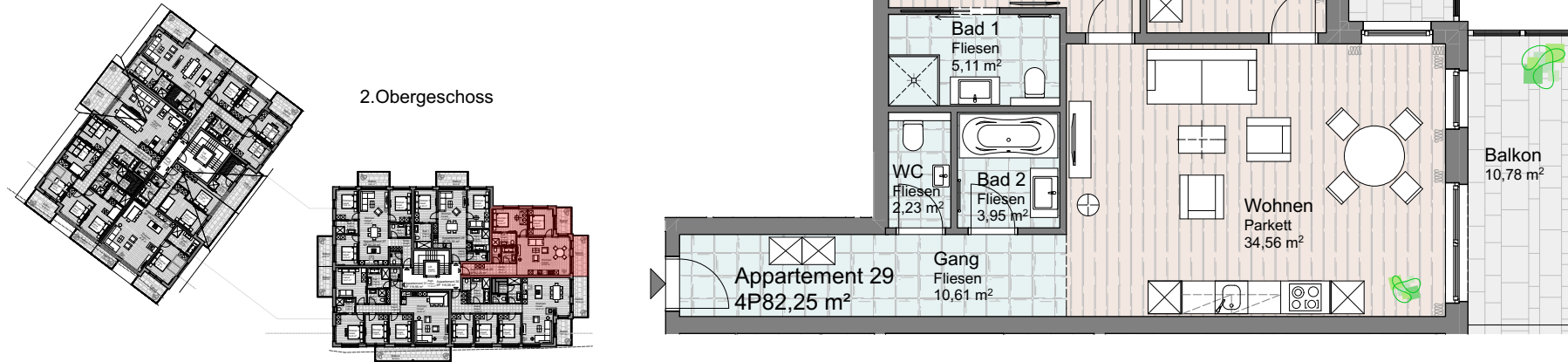
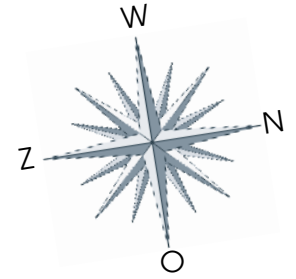


- Beautiful apartment for 4 people facing west • A balcony facing west (approx. 8 m²) • Includes terrace furniture • Spacious living room of approx. 31 m² with balcony access • Luxury designer kitchen with A-brand appliances • Two bedrooms • Two luxurious bathrooms, one with bathtub and one with toilet • Separate toilet • Includes luxurious furnishings • Multiple Smart TVs and one soundbar • Fast wireless internet and full package TV. Broadcasters (among others Dutch) • Intercom • 1 parking spaces.

The specified m² concerns the interior dimensions of the houses excluding walls.

Apartment TOP 29 Second floor

4P Approx. 82 m² (excluding storage).

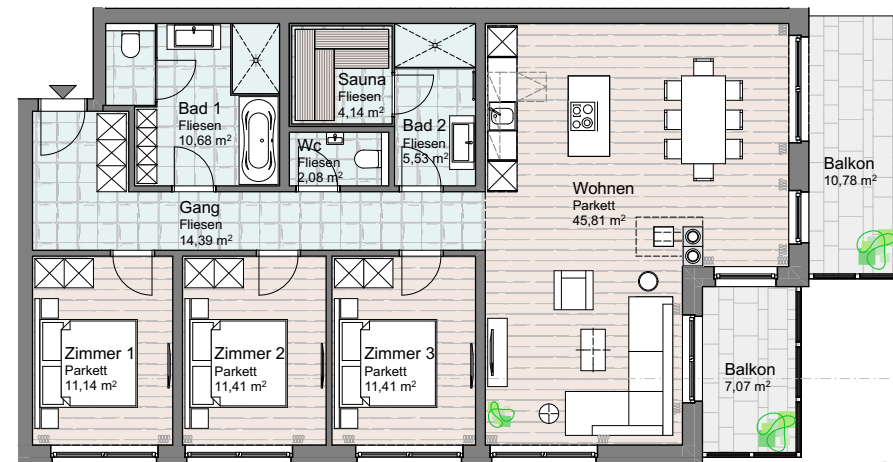
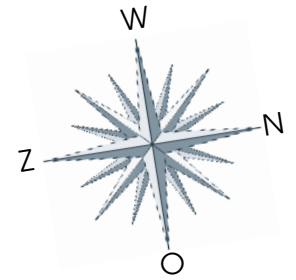


- Beautiful apartment for 4 people facing north-west • Two balconies facing north (approx. 7 m² and 10 m², respectively) • Includes terrace furniture • Spacious living room of approx. 34 m² with balcony access • Luxury designer kitchen with A-brand appliances
- Two bedrooms, one with balcony access • Two luxurious bathrooms, one with bathtub and one with toilet • Separate toilet • Includes luxurious furnishings • Multiple Smart TVs and one soundbar • Fast wireless internet and full package TV. Broadcasters (among others Dutch) • Intercom • 1 parking space.

The specified m² concerns the interior dimensions of the houses excluding walls.

Apartment TOP 30 Second floor

6P Approx. 116 m² (excluding storage).

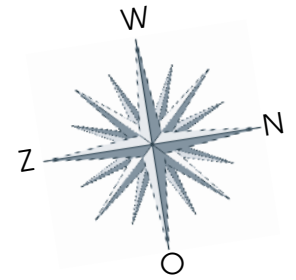


- Spacious apartment facing north-east for 6 people
- Two balconies facing north (approx. 10 m² and 7 m², respectively)
- Includes terrace furniture
- Spacious living room of approx. 45 m² with access to terrace
- Luxury design kitchen with cooking island and A-brand appliances
- Three bedrooms
- Two luxurious bathrooms, one with sauna and one with bathtub
- Separate toilet
- Includes luxurious furnishings
- Multiple Smart TVs and one soundbar
- Fast wireless internet and full package TV. Broadcasters (among others Dutch)
- Intercom
- 2 parking spaces.

The specified m² concerns the interior dimensions of the houses excluding walls.

Apartment TOP 31 Second floor

8P Approx. 119 m² (excluding storage).

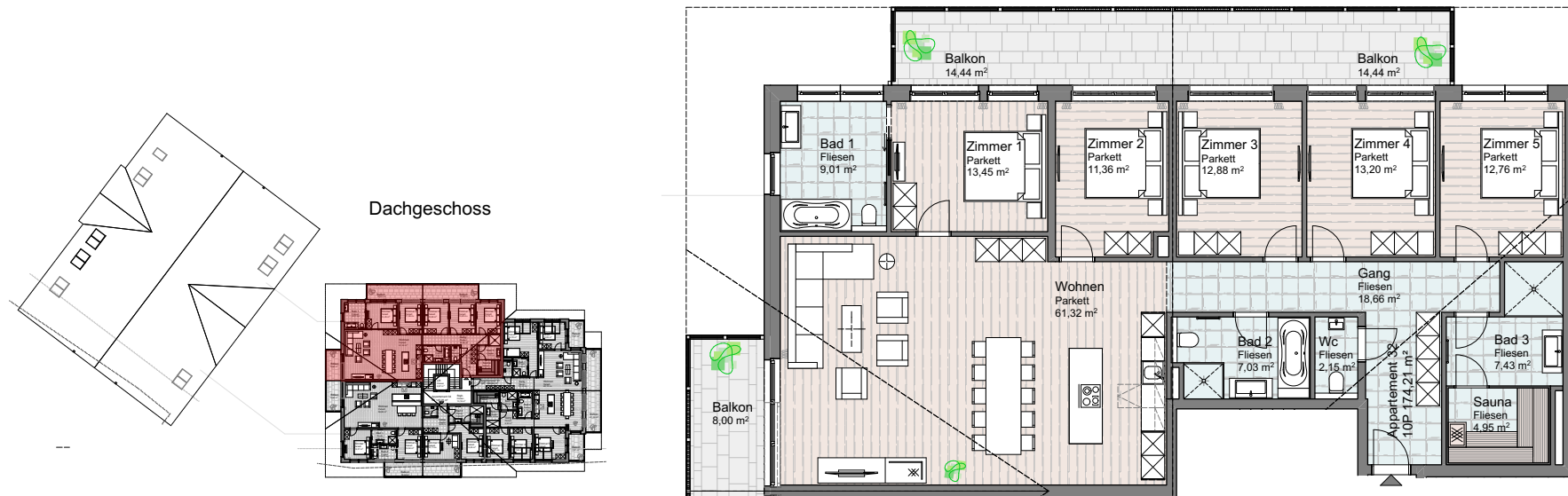
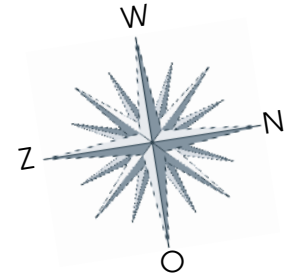


- Large apartment facing south-east for 8 people • Two balconies, one facing east (approx. 18 m²) and one facing south (approx. 8 m²)
- Includes terrace furniture • Spacious living room of 36 m² with balcony access • Luxury designer kitchen with A-brand appliances
- Four bedrooms, three with balcony access • Three luxurious bathrooms, one with bathtub and two with toilet • Separate toilet
- Includes luxurious furnishings • Multiple Smart TVs and one soundbar • Fast wireless internet and full package TV. Broadcasters (among others Dutch) • Intercom • 2 parking spaces.

The specified m² concerns the interior dimensions of the houses excluding walls.

Apartment TOP 32 Penthouse

10P Approx. 174 m² (excluding storage).

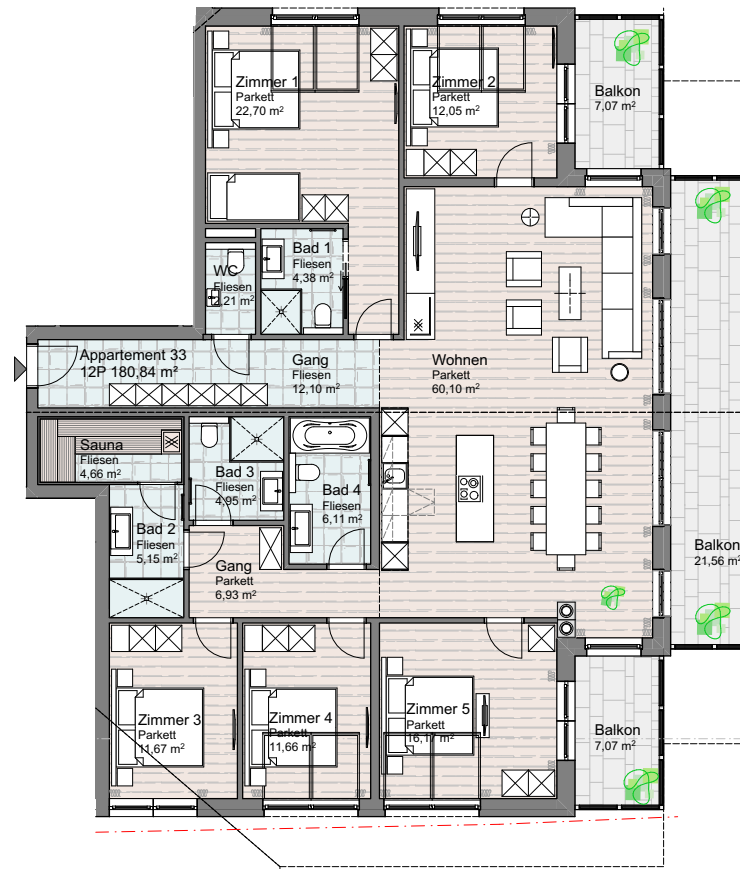
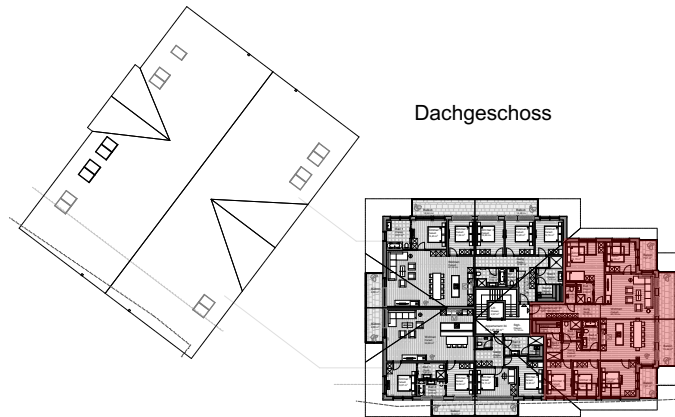
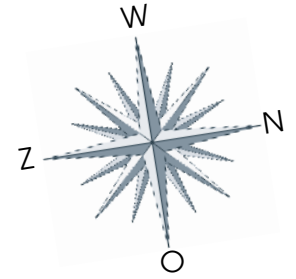


- Superb, spacious penthouse facing south-west for 10 people • Three balconies facing south-west (two approx. 14 m² and one approx. 8 m²) • Includes terrace furniture • Spacious living room of 61 m² • Luxury design kitchen with cooking island and A-brand appliances
- Five bedrooms, four with access to terrace • Three luxurious bathrooms, one with sauna and two with bathtub • Separate toilet
- Includes luxurious furnishings • Multiple Smart TVs and one soundbar • Fast wireless internet and full package TV. Broadcasters (among others Dutch) • Intercom • 3 parking spaces.

The specified m² concerns the interior dimensions of the houses excluding walls.

Apartment TOP 33 Penthouse

12P Approx. 180 m² (excluding storage).

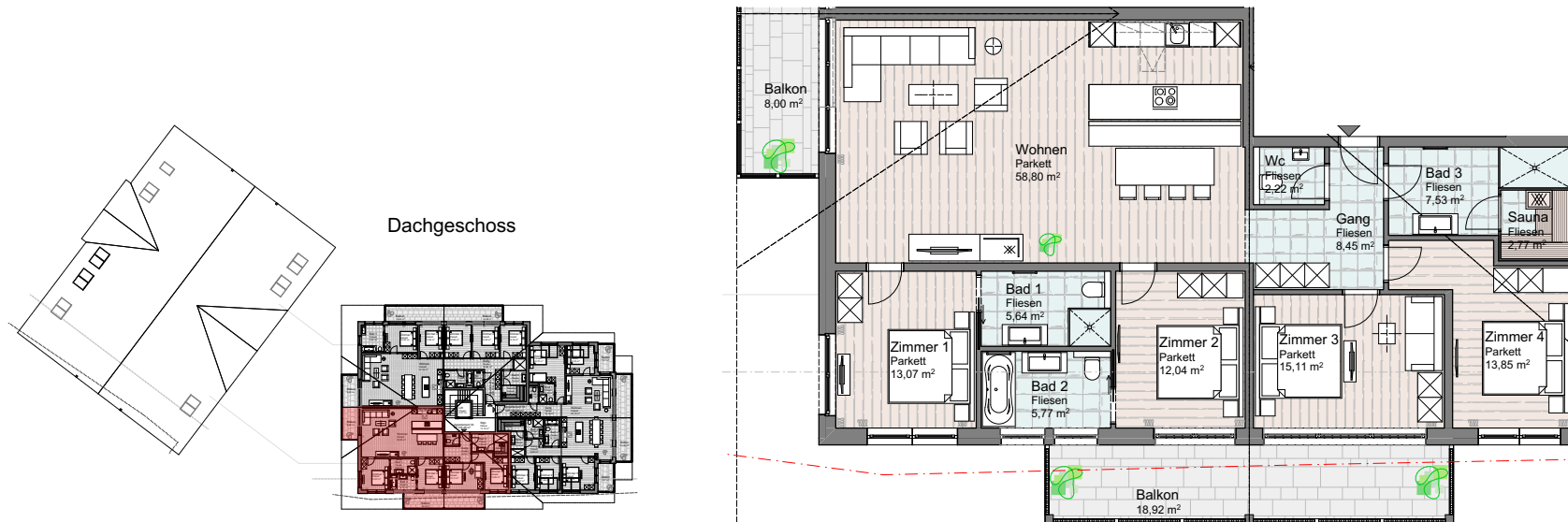
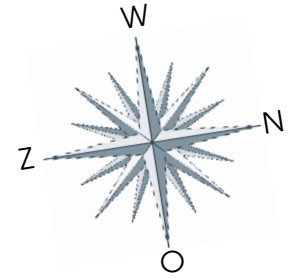


- Superb, spacious penthouse facing north-east for 12 people • Three balconies facing north-east (two approx. 7 m² and one approx. 21 m²) • Includes terrace furniture • Spacious living room of 60 m² with balcony access • Luxury design kitchen with cooking island and A-brand appliances • Five bedrooms, one with bunk beds and two with access to terrace • Four luxurious bathrooms, one with a sauna and one with a bathtub • Separate toilet • Includes luxurious furnishings • Multiple Smart TVs and one soundbar • Fast wireless internet and full package TV. Broadcasters (among others Dutch) • Intercom • 4 parking spaces.

The specified m² concerns the interior dimensions of the houses excluding walls.

Apartment TOP 34 Penthouse

8P Approx. 145 m² (excluding storage).



- Superb, spacious penthouse facing south-east for 8 people
- Two balconies facing south-east (one approx. 8 m² and one approx. 18 m²)
- Includes terrace furniture
- Spacious living room of 58 m² with balcony access
- Luxury design kitchen with cooking island and A-brand appliances
- Four bedrooms, two with balcony access
- Three luxurious bathrooms, one with a sauna and one with a bathtub
- Separate toilet
- Includes luxurious furnishings
- Multiple Smart TVs and one soundbar
- Fast wireless internet and full package TV. Broadcasters (among others Dutch)
- Intercom
- 2 parking spaces.

The specified m² concerns the interior dimensions of the houses excluding walls.

ENJOYING REAL ESTATE WITH EXCELLENT RETURNS

RESIDENZ
ILLYRICA



TIROL



Info: Romex Investments B.V., Röntgenlaan 1, 2719 DX Zoetermeer, The Netherlands
T +31 (0) 79 3615927 | www.romex-investments.com

Romex Investments B.V. is not subject to licensing
to these investment objects and is not under the supervision of the AFM.

